

1 32 beam splitter splitting ratio



Overview

A typical split ratio in a PON application is 1:32, meaning one incoming fiber split into 32 outputs. And the qualified fiber optic signal can be transmitted over 20 km. Free 1-hour onboarding. Common ratios: For cascades, add losses and validate margin using the Optical Budget tool. Beamsplitters are often classified according to their construction: cube or plate. Thorlabs offers a wide range of optical beamsplitters. Our plate beamsplitters have a coated front surface that determines the beam splitting ratio while the back surface is wedged and AR coated in order to minimize ghosting and interference effects., (1×32, 1×64 and beyond), uniform output, stable across temperature variations.

1 32 beam splitter splitting ratio



Our plate beamsplitters have a coated front surface that determines the beam splitting ratio while the back surface is wedged and AR coated in order to minimize ghosting and interference effects.



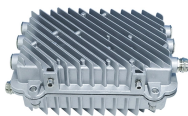
Splitter ratios affect insertion loss and serviceability. Common ratios: For cascades, add losses and validate margin using the Optical Budget tool. Compare typical losses and use-cases; ...



For example, a 1:32 splitter takes 1 input signal and splits it into 32 equal (or nearly equal) output signals. Split ratios are the foundation of PON capacity planning—choosing the wrong ...



The split ratio (for example, 1:32, 1:64) determines how many subscribers share an OLT (Optical Line Terminal) port and has a direct impact on optical budget, signal strength, and future growth.



Our polarizing splitters are available in both plate and cube forms in a wide variety of dimensions and shapes. If your design needs a specialized splitter, we can also fabricate custom ...



The split ratio of light transmittance and reflectance is 1:1 and is called a half mirror. The 2 forms of beamsplitters are cube and plate type. Good fit for large beam size applications at a reasonable ...



The passive optical splitter is essential for splitting a single Point-to-Multi-Point (P2MP) physical fiber network. By connecting with OLT and ONU, the fiber splitter can achieve split ratios of ...



Beamsplitters are optical components used to split incident light at a designated ratio into two separate beams. Additionally, beamsplitters can be used in reverse to combine two different beams into a ...



A typical split ratio in a PON application is 1:32, meaning one incoming fiber split into 32 outputs. And the qualified fiber optic signal can be transmitted over 20 km.



GPON deployment uses a splitting ratio of 1:32 or 1:64. Current GPON standards specify up to 128 splits on a single GPON port. These same standards set the distance between active devices at up to 20 ...

Contact Us

For more information, pricing, or custom energy solutions, please contact us:

Website: <https://www.gdroofing.co.za>

Email: sales@gdroofing.co.za

Phone: +27 72 418 9365

Address: 22 Electron Avenue, Isando, Johannesburg, 1600, South Africa

This document is for informational purposes only. Specifications subject to change without notice.

