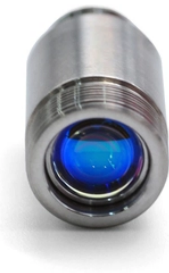


100g optical module fiber



100g optical module fiber



The 100G QSFP28 module solution provides high-performance 100GbE connectivity for data centres, enterprise core & distribution layers, computing networks and service provider applications.



QSFP28 100G CWDM 1310nm 40km Single Lambda SMF Duplex LC Optical Module Compatible with Cisco Mikrotik HPE TP-LINK HP Juniper DDM Features Tested in Targeted Switches for Superior ...



The Cisco QSFP-100G-SR-S Module is a pluggable optical transceiver with a duplex LC connector interface supporting link lengths of 70 and 100 meters on laser-optimized OM3 and ...



100G QSFP28 optical transceivers are suitable for 100Gigabit Ethernet, EDR InfiniBand, or 32G Fiber Channel networks. The QSFP28 100G transceiver features four high-speed differential signaling ...



QSFP28 transceiver that supports 100G connections up to 10 km using single-mode fiber with a duplex LC UPC connector.



Q What is the maximum distance a 100G QSFP28 optical transceiver can reach? Standard modules reach up to 10km (LR4) or 40km (ER4), while specialized ZR4 modules can reach ...



The 100G QSFP28 module solution provides high-performance 100GbE connectivity for data centres, enterprise core & distribution layers, computing networks and ...



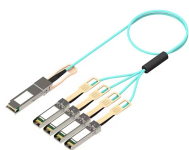
As one of the most popular transceiver types in 100G Ethernet applications, the QSFP 100G LR4 offers a powerful combination of long reach, compact form factor, and compatibility with single-mode fiber ...



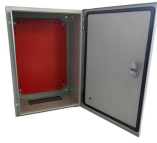
This guide breaks down QSFP28 modules - SR4, LR4, and DR, with advice on reach, fiber types, connectors, power, DOM, interoperability, and lifecycle management.



Explores 100G Optical Modules types and modulation techniques, focusing on PAM4 and coherent optics to improve performance and bandwidth.



Upgrade to 100G without pulling MPO cables. WolonFiber's 100G QSFP28 SRBD transceivers push 100Gbps over your existing Duplex LC multimode fiber infrastructure.



QSFP28 transceiver that supports 100G connections up to 10 km using single ...

Contact Us

For more information, pricing, or custom energy solutions, please contact us:

Website: <https://www.gdroofing.co.za>

Email: sales@gdroofing.co.za

Phone: +27 72 418 9365

Address: 22 Electron Avenue, Isando, Johannesburg, 1600, South Africa

This document is for informational purposes only. Specifications subject to change without notice.

