

12-core fiber optic distribution box for local area networks franchise available



12-core fiber optic distribution box for local area networks franchises



Our fiber optic distribution boxes provide protected, organized handoff points for FTTH/FTTB and campus networks.



This distribution box terminates up to 2 fiber optic cables, offers spaces for splitters and up to 16 fusions, allocates 16 SC adapters and working under outdoor environments.



This 12 port fiber access terminal box is designed to connect feeder cables to subscriber drop cables for FTTH last-mile fiber connectivity. It integrates fiber splicing, optical signal splitting, termination and ...



Fiber Optic Distribution Box, 12 Port Wall Mount Enclosure with 12 SC APC Adapters, Singlemode, FTTH, IP65 Waterproof Outdoor/Indoor Use - 9.45" x 8.66" x 2.56"



It provides secure splicing, distribution, and protection for up to 12 optical fiber cores, making it ideal for telecom rooms, offices, and residential installations. Built from flame-retardant ...



The 12 Port Fiber Distribution Box can connect up to 2 optical cables, providing space for distributors and 12 fuses. It is equipped with 12 SC adapters and can work in outdoor environments.



This branded distribution box is ideal for use in FTTH, FTTx, data centers, LAN/WAN backbones, telecom exchange rooms, and CATV networks. Built from cold-rolled steel with anti-corrosive ...



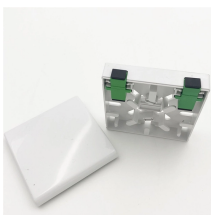
FBR-11608 Fiber-Optic Distribution Box, 12-Core is a high quality product by Bud Industries used for electronic enclosure applications.



With a maximum capacity of 12 cores and the ability to accommodate 3 pieces of 8-13mm cables, it provides ample space for your connectivity needs. What sets it apart is the innovative design that ...



12 Core FTTH Fiber Terminal Box allows you to organize and protect fiber optic connections in a compact space. The termination box supports up to 12 SC connectors or a variety of other adapters ...



This 12 port fiber access terminal box is designed to connect feeder cables to ...

Contact Us

For more information, pricing, or custom energy solutions, please contact us:

Website: <https://www.gdroofing.co.za>

Email: sales@gdroofing.co.za

Phone: +27 72 418 9365

Address: 22 Electron Avenue, Isando, Johannesburg, 1600, South Africa

This document is for informational purposes only. Specifications subject to change without notice.

