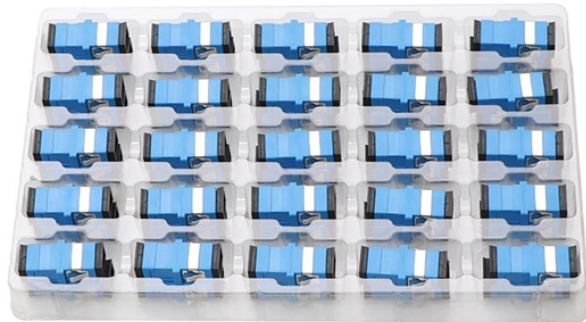
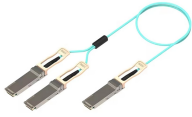


## 20010 Cable Tray Funnel



## 20010 Cable Tray Funnel



Raceway, Cable Tray, Duct, & Trough Raceway, Cable Tray, Duct, & Trough



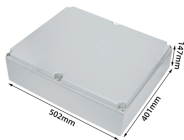
For high mechanical requirements, metal outlet funnels or steel outlet funnels are suitable. For complex tray routing, it is worth considering vertical branches or 90° rotated variants in order to make optimal ...



Cable tray installed in a hazardous location must contain only those cables that are appropriate for this type of environment as defined in Chapter 5 of the NEC.



An outlet funnel for cable tray connects straight tray runs with outgoing cable routes. The formed part expands or redirects the usable cross-section so that cable bundles can exit the tray in a controlled ...



Choose from our wide range of cable carrier sizes and finishes. Our range of components lets you configure a cable tray to route cables through unused space while keeping them accessible for easy ...



Cablofil steel trough trays provide the strength and security required when then need to limit cable access is of primary importance.



It is designed for mechanical support and strain relief in long runs of cable and creates a smooth gradual bend for cable. Rail and stringer material is 16 ga steel tubing.



Choose from our selection of cable trays, including over 850 products in a wide range of styles and sizes. Same and Next Day Delivery.



Hardware shall be zinc plated in accordance with ASTM B633 SC1 for pre-galvanized cable trays, or Chromium Zinc in accordance with ASTM F-1136-88 for hot dip galvanized cable trays.



cable management solution for wire basket trays. Featuring innovative over-sidewall technology, installers can eliminate stress and pressure points on cable while removing the need



Unlike other instrumentation channel tray, the KwikSplice cable channel can be cut and spliced at any point along the tray, simplifying field modification. Plus, it is available with perforated holes along the ...

## Contact Us

For more information, pricing, or custom energy solutions, please contact us:

Website: <https://www.gdroofing.co.za>

Email: [sales@gdroofing.co.za](mailto:sales@gdroofing.co.za)

Phone: +27 72 418 9365

Address: 22 Electron Avenue, Isando, Johannesburg, 1600, South Africa

This document is for informational purposes only. Specifications subject to change without notice.

