

24-core ADSS special luminous cable span marking



24-core ADSS special luminous cable span marking



Color 13 ~ 24 will be marked with a black tracer. For black color no need marked black tracer, will use nature color instead.



The economical single-jacket design can span distances of 800 ft in NESC light conditions, 650 ft in NESC medium conditions and 450 ft in NESC heavy conditions.



6. Cable sheath Marking Marking Color: White
Interval: 1m+1.0% Contents(for example):



See the attached cabled optical fibre data sheet. Fillers are Black. Wooden drums with protection. Standard delivery length is 4 km with a tolerance of $\pm 5\%$. All sizes and values without tolerances are ...



- The cable has an outer sheath of black HDPE and provides over 1500N of tensile strength with operating temperatures from -25°C to $+70^{\circ}\text{C}$. - Additional details are provided on fiber and cable ...



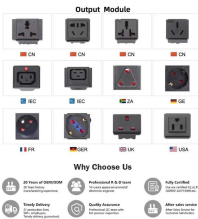
This specification covers the construction all dielectric self-supporting Optical Fiber Cable (ADSS) properties for outdoor application. The optical fiber cable contains 24 cores (6cores/tube) single ...



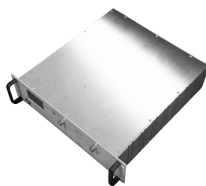
PTCL and PO number shall be marked on outer sheath of cable after interval of one meter in addition to length marking. Marking shall be visible preferably in white colour.



The cladding diameter refers to the outer layer of the fiber that surrounds the core. It is crucial for ensuring proper fiber alignment during installation and performance.



The design of ADSS cable takes full account of the actual situation of power lines and is suitable for different grades of high voltage transmission lines. Polyethylene (PE) sheath can be ...



The optical fiber drop cable shall have sequentially numbered length marking at intervals of approximately 1 meter. The starting number of ordering length for any coil shall begin whit zero meter.

Contact Us

For more information, pricing, or custom energy solutions, please contact us:

Website: <https://www.gdroofing.co.za>

Email: sales@gdroofing.co.za

Phone: +27 72 418 9365

Address: 22 Electron Avenue, Isando, Johannesburg, 1600, South Africa

This document is for informational purposes only. Specifications subject to change without notice.

