

# 24-pin connector box fiber optic cable tips



## Overview

AFL's Inspection Adapter Tips are essential tools for maintaining the integrity of fiber-optic connections. Designed and engineered for efficiency, accuracy, and reliability during cable and connector inspections, they identify defects and anomalies with utmost clarity and confidence. Optimized for FTTx networks, connecting drop cables to feeder cables for up to 24 users. IP55 rating ensures dependable performance in indoor and outdoor environments. Inquiry Now  Add to Basket Customization Options. This box is used as a termination point for the feeder cable to connect with drop cable in FTTx communication network system. It integrates fiber splicing, splitting, distribution, storage and cable connection in one unit. The cable entries (inlets) are loaded with PG16 IP68 rated gland to protect the optical cables and transmission performance.

## 24-pin connector box fiber optic cable tips



With a total capacity of 24 fiber terminations and 24-core splicing, this unit offers a scalable and secure termination point for next-generation fiber networks.



an MPO connector. Both MTP® and MPO fiber optic connectors comply with the international Fiber Optic Connector Intermateability Standards “IEC-61754-5” and the North American “TIA-604-5 ...



With a total capacity of 24 fiber terminations and 24-core splicing, this unit offers a ...



AFL offers a wide range of fiber optic inspection adapter tips for various connector types. These tips are compatible with AFL inspection probes and provide high-quality inspection of fiber optic connectors, ...



24 Core Fiber Optic Termination/Distribution Box model SP-1606-24A is used as a termination point for the feeder cable to connect with drop cable in FTTx communication network system. It supports fiber ...



Premium Line's 24 port wall mount fiber optic box is designed for direct termination of fibers. The box includes two separate sections: one for the fusion splice trays and one for the cable routing.



The equipment is used as a termination point for the feeder cable to connect with drop cable in FTTx communication network system. The fiber splicing, splitting, distribution can be done in this box, and ...



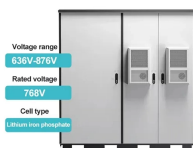
Suited for FTTH engineering cables reaching buildings, it can be installed in corridors, basements, computer rooms and exterior walls. It enables fiber splicing, splitting and distribution while providing ...



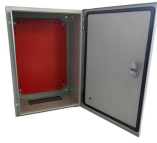
The FOTB-6-24 termination box is designed for higher-capacity fiber terminations, featuring 1 input gland that supports cables up to 20 mm in diameter and a splice capacity of 24 fibers.



This box is used as a termination point for the feeder cable to ...



The FDB-24N3 is a robust IP55-rated fiber optic distribution box for FTTx networks, supporting 24-core splicing and 4x1:8 tube splitters for reliable indoor/outdoor connectivity.



This box is used as a termination point for the feeder cable to connect with drop cable in FTTx communication network system. It intergrates fiber splicing, splitting, distribution, storage and cable ...

## Contact Us

For more information, pricing, or custom energy solutions, please contact us:

Website: <https://www.gdroofing.co.za>

Email: [sales@gdroofing.co.za](mailto:sales@gdroofing.co.za)

Phone: +27 72 418 9365

Address: 22 Electron Avenue, Isando, Johannesburg, 1600, South Africa

This document is for informational purposes only. Specifications subject to change without notice.

