

# GDR Telecom Site Energy Systems

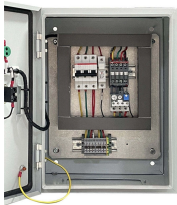
## 250A Distribution Box



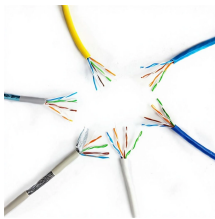
## 250A Distribution Box



Increase the number of outputs with one input using a jumper on blocks with a Max Current Rating, IEC up to 160 A. Blocks with 1,000 VAC/DC Max Working Voltage, UL are ideal for solar applications.



Rated at 250A, this block is designed for general electrical panels and light machinery applications. Compact design, IEC CE and RoHS certified for superior performance.



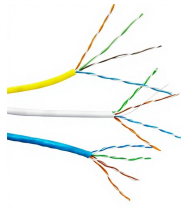
Part #: UKK250. Item: Power Distribution DIN Rail Mount 250A 690V. Maximum Load Current: 250A. DIN Rail (mm): 35, DIN Rail not included. Condition: New (boxed). Number of output: ...



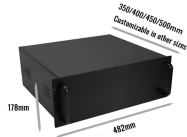
Distribution Terminal Block - 1-pole, 11-way, 250 A is a 250A single-pole modular distribution terminal block designed for high-capacity power distribution in control panels. Its compact design and DIN rail ...



The Liccx 250A Din Rail Distribution Box provides a durable and highly conductive solution for safe and efficient power distribution in various electrical setups.



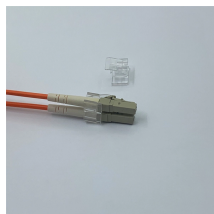
UKK Series Single Pole Distribution Blocks ...  
Features Tinned copper or ...



With features like transparent covers, flame-resistant materials, and secure screw connections, VIOX UKK Distribution Blocks provide reliable and safe power distribution solutions for today's demanding ...



TR-250A - Four Pole Distrib. Block with Threaded Bars, 250 A.



[Easy Installation] Quick and simple mounting on the rail for convenient setup in power distribution cabinets and high voltage cabinets. [High Quality Copper Conductor] Provides high conductivity, low ...



Combination Card Slot: The terminal distribution box has one inlet and multiple outlets, and is equipped with a combination of card slots, which can be arbitrarily combined and matched to improve work ...



UKK Series Single Pole Distribution Blocks ...  
Features Tinned copper or aluminum block allows for copper or aluminum conductor direct connections, or using ferrule Screw retaining cover is hinged ...

## Contact Us

For more information, pricing, or custom energy solutions, please contact us:

Website: <https://www.gdroofing.co.za>

Email: [sales@gdroofing.co.za](mailto:sales@gdroofing.co.za)

Phone: +27 72 418 9365

Address: 22 Electron Avenue, Isando, Johannesburg, 1600, South Africa

This document is for informational purposes only. Specifications subject to change without notice.

