

GDR Telecom Site Energy Systems

2m optical module



2m optical module



All Optimom 2M models are powered by Teledyne e2v's proprietary 2-Megapixel, low-noise, global shutter image sensor which provides sharp images of fast-moving objects.



Teledyne e2v released its 2-Megapixel Optimom, the first in a range of MIPI CSI-2 optical modules for vision-based embedded systems. Optimom 2M features a native MIPI CSI-2 protocol ...



Topaz 2M features the world's smallest global shutter pixel, which allows it to be matched with compact and cost-effective 1/3-inch lenses while still maximizing sensitivity and signal ...



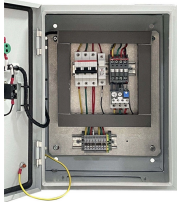
The module combines the latest innovations in imaging and optics into a one-stop imaging solution by mounting a proprietary image sensor onto a panel with fixed lens or multi-focal ...



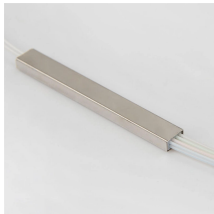
These industrial-grade optical modules use our high performance Snappy 2MP global shutter CMOS image sensors and have been designed to meet the specific demands of code/text ...



The module combines the latest innovations in imaging and optics into a one-stop imaging solution by mounting a proprietary image sensor onto a ...



Optimom 2M comprises a proprietary global shutter image sensor, a compact board, a standard FPC connector, and full complementary lens, available in various options.



Design requirements Modern optical module designs often require: Reduced power consumption to control and limit module temperature rise. Dynamic and precise control of laser diodes to regulate ...



All Optimom 2M models are powered by Teledyne e2v's proprietary 2-Megapixel, low-noise, global shutter image sensor which provides sharp images of fast-moving objects.



In this demonstration, taken at Embedded World 2023, see the Optimom™ 2M imaging module with Multi-Focus live in action. For more information visit <https://i...>

Contact Us

For more information, pricing, or custom energy solutions, please contact us:

Website: <https://www.gdroofing.co.za>

Email: sales@gdroofing.co.za

Phone: +27 72 418 9365

Address: 22 Electron Avenue, Isando, Johannesburg, 1600, South Africa

This document is for informational purposes only. Specifications subject to change without notice.

