

## 40G single-mode optical module 80km range



## 40G single-mode optical module 80km range



The QSFP+ 40GBASE ZR4 transceiver module supports 4x 10.3125G data transmission of 80km over SMF. The 40G ER4 optical module complies with ...



A QSFP 40G 80km transceiver is a long-reach 40Gbps optical module designed to transmit data up to 80km over single-mode fiber, typically based on extended-reach 40G ZR4 or enhanced ER4 optical ...



The VC-40GQSFP-DWxx-80 is a transceiver module designed for 80km optical communication applications. The design is compliant to 40GBASE-ZR4 of the IEEE P802.3ba standard. The module ...



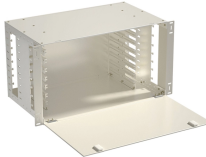
The Cisco 40GBASE-ER4 QSFP Module supports link lengths up to 40km over G.652 single-mode fiber with duplex LC connectors. The 40GE or OTU3 signal is carried over four ...



GIGALIGHT 40G QSFP+ ZR4 optical transceiver module is designed for long-distance interconnectivity in data centers. It complies with the 40G Ethernet transmission protocol and supports dual rates of ...



FS 40G QSFP+ optical transceiver module solutions offer a full range of QSFP+ modules from 150m to 80km reach, and used for high-density switching, routing and data center applications.



The VC-40GQSFP-DWxx-80 is a transceiver module designed for 80km optical communication applications. The design is compliant to 40GBASE-ZR4 of the ...



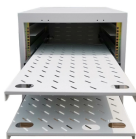
The 40G QSFP+ transceiver module is a hot-swappable, parallel fiber-optical module with four independent optical transmit and receive channels. These channels can terminate in another 40 ...



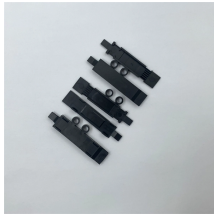
T1-QSFP-40G-DWDM-C-XX's pluggable optical transceiver modules are designed for multiple 40GE links up to 80km distance over standard G.652 single-mode optical fibers (SMF). For short distances, ...



The QSFP+ 40GBASE ZR4 transceiver module supports 4x 10.3125G data transmission of 80km over SMF. The 40G ER4 optical module complies with QSFP MSA and RoHS standards. The module ...



The 40g launched by xianyitong technology meets the qsfm MSA standard and adopts highly reliable lasers with transmission distances of 100m, 300m, 1.4km, 2km, 10km, 30km, 40km and 80km. It can ...



The QSFP-4080-ZR4 is a long range single-mode 40G QSFP+ optical module compatible with the 40GBase-ZR4 specifications. It uses 4 CWDM 10G lasers running 1295~1310nm and combining ...

## Contact Us

For more information, pricing, or custom energy solutions, please contact us:

Website: <https://www.gdroofing.co.za>

Email: [sales@gdroofing.co.za](mailto:sales@gdroofing.co.za)

Phone: +27 72 418 9365

Address: 22 Electron Avenue, Isando, Johannesburg, 1600, South Africa

This document is for informational purposes only. Specifications subject to change without notice.

