

GDR Telecom Site Energy Systems

40km module light decay



40km module light decay



In this guide, you'll learn what SFP+ 40km really means, how 10GBASE-ER compares to alternatives like BX40, and how to choose the right module based on distance, compatibility, and ...



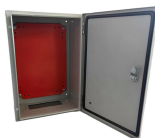
ion applications compliant to Ethernet 100GBASE-ER4 standard. The module converts 4 input channels of 25Gb/s electrical data to 4 channels of LAN WDM optical signals and then multiplexe.



100G QSFP ER4L 40km • Support line rates from 103.125 Gbps to 111.81Gbps • Compliant with QSFP28 Standard: SFF-8665 Revision 1.9, SFF-8636 Revision 2.6



10G SFP+ Transceiver Overview The 10G SFP+ transceivers are high performance, cost effective modules supporting data rate of 10Gbps and 40. m transmission distance with SMF. The transceiver ...



The QSFP28 100G ER4 optical module, with its compact design and robust 40km transmission capability, has emerged as a core component enabling high-performance network expansion.



The SFP1G-LH-31 series single-mode transceivers are small form factor pluggable module for bi-directional serial optical data communications such as Gigabit Ethernet 1000BASE-LX and Fiber ...



This color code can be on a module bail latch, pull tab, or other visible feature of the module when installed in a system. The color code scheme is specified in Table 6-1.



2.5G BIDI SFP 40km module provides SDH STM-16 and SONET OC-48 system throughput up to 40km over SMF by using 1550nm transmitter and 1490nm receiver - AscentOptics.



So, how to choose the most suitable module in many different speed, different packaging, different functions of the Optical Transceiver Module? We will give you some tips.



1000BASE-ZX and Fiber Channel 1x SM-LC-L FC-PI. It is with the S P 20-pin connector to allow hot plug capability. This module is designed for single mode fiber and operates at a nominal wave length ...

Contact Us

For more information, pricing, or custom energy solutions, please contact us:

Website: <https://www.gdroofing.co.za>

Email: sales@gdroofing.co.za

Phone: +27 72 418 9365

Address: 22 Electron Avenue, Isando, Johannesburg, 1600, South Africa

This document is for informational purposes only. Specifications subject to change without notice.

