

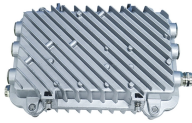
45-degree cable tray angle



45-degree cable tray angle



Compact fiberglass 45 degree horizontal bend fitting for Cope cable tray systems—pre-drilled for easy installation.



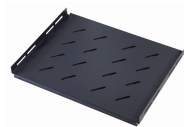
This bend provides a 45° angle bend when connecting cable tray sections.



Horizontal Bend, 45 Degree, 24" Radius, 12" Wide, 6" High, Aluminum Horizontal Bend, Series 2,3,4& 5, 5" NEMA / 6" Height, 45 Deg., 12" Width, 24" Radius, Aluminum



Would someone kindly let me know the formula to create a flat 45 in say 100 mm cable tray for example. So I can then use the formula on different cable tray sizes and to different angles.



This copper-free aluminum cable tray vertical bend-out provides a 45-degree change in direction for cable runs. It features a ventilated design, a 610mm radius, a 300mm width, and 178mm side rails, ...



Shop Series 2-5, Cable Tray Fitting, Aluminum, 45 Degree Angle, Vertical Outside Bend, 24 In. Bend Radius, Green, 4 H X 6 W In. By B-Line (Eaton) (4A0645VO24) At Graybar, Your Trusted Resource ...



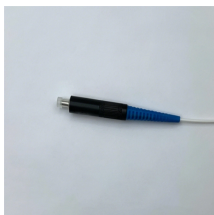
The 45° Horizontal Elbow boasts a horizontal bend that grants the flexibility for a 45° cable tray to navigate left or right. Moreover, this design ensures a secure cable support platform during cable tray ...



Shop Cope I-BEAM ladder tray 45 degree bend for reliable NEMA cable tray installations.



Specification Sheet Materials inuuous system as well as stand-alone elements. ASP 45° Cable Trays offers a 24" bend radius for ease of coax installation and are available in sta ard depth of 4" with ...



THIS DRAWING AND/OR THE TECHNICAL INFORMATION CONTAINED HEREON IS THE PROPERTY OF EATON CORPORATION ("EATON"), AND IS ISSUED IN CONFIDENCE FOR ...

Contact Us

For more information, pricing, or custom energy solutions, please contact us:

Website: <https://www.gdroofing.co.za>

Email: sales@gdroofing.co.za

Phone: +27 72 418 9365

Address: 22 Electron Avenue, Isando, Johannesburg, 1600, South Africa

This document is for informational purposes only. Specifications subject to change without notice.

