

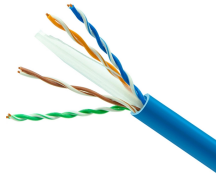
A Level 1 Temporary Distribution Box



A Level 1 Temporary Distribution Box



Find reliable temporary power distribution centers with circuit breaker protection. Shop professional-grade options for construction and outdoor use.



The specifications for the Mini X-Treme Box indicate that it uses a 125/250V 30A ...



These temporary power distribution boxes feature 1, 3 or 4 adjustable circuit breakers, with a range of amperage and voltage ratings. The Load Master® Series portable power distribution racks are ...



Power Distribution Box, NEMA 3R Enclosure with Roll Cage Handles. Includes: (1) 50 Amp, 125/250 Volt AC, Locking, California Style CS63 Power Inlet and Feed Thru (1) 30 Amp, 250 Volt AC NEMA ...



GFCI meets UL 943 requirements with 4-6 milliamp trip level, <25 milliseconds trip time Rating: 50-Amp 125/250V 3 Pole 4 Wire, Power Inlet CS6375, Feed-Thru CS6369



Walther's Portable Power Distribution Units (PDU) safely centralize and distribute power from temporary power poles or job-site generator. Fitted with multiple outputs, Overcurrent Protection included.



E-abel manufactures this type of temporary power distribution box and related E-abel electrical enclosure solutions for construction, municipal, industrial, and outdoor event projects.



Choose from our selection of temporary power distribution boxes in a wide range of styles and sizes. Same and Next Day Delivery.



The specifications for the Mini X-Treme Box indicate that it uses a 125/250V 30A L14-30P twist-to-lock inlet. This type of inlet is typically used for single-phase power, not three-phase power.



Power Tech Temporary Power Distribution Box, ETL approved for indoor/outdoor use. Features 15/20A outlets & 30A/50A Twistlocks for contractor needs.



Power Tech®'s Temporary Power Distribution Box is used by contractors on jobsites (indoor or outdoor) to provide and distribute power from temporary power poles or jobsite generators.

Contact Us

For more information, pricing, or custom energy solutions, please contact us:

Website: <https://www.gdroofing.co.za>

Email: sales@gdroofing.co.za

Phone: +27 72 418 9365

Address: 22 Electron Avenue, Isando, Johannesburg, 1600, South Africa

This document is for informational purposes only. Specifications subject to change without notice.

