

## Access Layer Switch Optical Port



## Access Layer Switch Optical Port



**120KM EXTENSION:** This SFP Ethernet switch can extend the fiber distance from 0 to 120km when used with different types of SFP module. quiet and stable operation, can be used as a core, ...



H3C FS5500V2-EI series switches provide enhanced ACL control logic, support large-capacity ingress and egress port ACLs, and support VLAN-based ACL delivery, which simplifies the user ...



This all-fiber access layer switch is ideal for connecting fiber-based devices like IP cameras and wireless APs, providing flexible, future-proof networking with high-speed aggregation capabilities.



The FOS-series has Managed Layer 2 Ethernet Access Switches, 1Gbps and 10Gbps uplink, up to 48 ports. The FOS-series is perfect for service providers and enterprises who plan to implement FTTX ...



Multiple physical switches can be virtualized into one logical unit to simplify network configuration and architecture, eliminating loops, and improving reliability.



Features 24 10G SFP+ optical ports and 2 100G QSFP28 ports, with all ports supporting wire-speed forwarding to meet high-density access requirements for ...



Our Ethernet network switches with fiber ports comes in managed or unmanaged formats combined with both Industrial and Commercial grades. Utilize our PoE switches to power your Ethernet devices ...



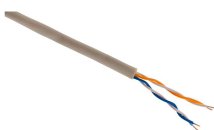
120KM EXTENSION: This SFP Ethernet switch can extend the fiber distance from ...



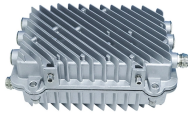
Discover what an all-optical Ethernet switch is, how it works, and the key benefits it brings to modern networks, from higher bandwidth to lower latency.



The DXS-3400 Series switches feature a modular fan and power supply design for a high availability architecture. The hot-swappable design means that fans and power supplies can be replaced without ...



Based on Advanced security features and advanced quality of service (QoS), it can be used as a core distribution or access layer switch with high port density, and easy to manage. The managed 10G ...



This all-fiber access layer switch is ideal for connecting fiber-based devices like IP ...



Features 24 10G SFP+ optical ports and 2 100G QSFP28 ports, with all ports supporting wire-speed forwarding to meet high-density access requirements for 10GE servers.

## Contact Us

For more information, pricing, or custom energy solutions, please contact us:

Website: <https://www.gdroofing.co.za>

Email: [sales@gdroofing.co.za](mailto:sales@gdroofing.co.za)

Phone: +27 72 418 9365

Address: 22 Electron Avenue, Isando, Johannesburg, 1600, South Africa

This document is for informational purposes only. Specifications subject to change without notice.

