

# Access Layer Switch Storm Control



## Overview

Storm control enables the switch to monitor traffic levels and to drop broadcast, multicast, and unknown unicast packets when a specified traffic level—called the storm control level—is exceeded, thus preventing packets from proliferating and degrading the LAN. Cisco switches offer a feature known as Storm Control, designed to monitor and control the levels of incoming traffic to prevent disruptions caused by multicast, broadcast, and unicast storms. When we have an excessive amount of broadcast traffic on the network then all devices within the broadcast domain will suffer. The switch has to flood all broadcast frames to interfaces in the same VLAN, hosts within the. Storm control is a security feature on network switches that prevents packets on a network interface from exceeding a predefined threshold. All MS series switches include control plane policing of STP and CDP/LLDP floods to ensure Meraki Cloud connectivity. Note: The Storm control settings will only be visible if the network.

## Access Layer Switch Storm Control



This documentation explains storm control settings for MS switches, allowing users to mitigate network congestion caused by excessive broadcast, multicast, or unknown unicast traffic.



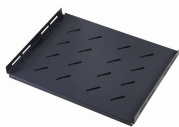
Storm control (or traffic suppression) monitors packets passing from an interface to the switching bus and determines if the packet is unicast, multicast, or broadcast.



Storm-Control is a feature on Cisco IOS Catalyst Switches that helps to block broadcast storms, multicast and unknown unicast traffic.



i've been searching for some "best practice" or recommendations to configure storm control in a cisco switch. we got a lot of sites and don't have the luxury of time to compute/customize ...



Storm control enables the switch to monitor traffic levels and to drop broadcast, multicast, and unknown unicast packets when a specified traffic level—called the storm control level—is exceeded, thus ...



This guide will walk you through the process of configuring storm control on your Cisco switches to keep your network running smoothly and efficiently. Before diving into configuration, it's ...



You can configure storm control to rate-limit broadcast traffic, multicast traffic (on some devices), and unknown unicast traffic at a specified level so that the switch drops packets when the specified traffic ...



Configuring storm control involves accessing your Cisco switch and using specific commands to set thresholds for each traffic type you want to control. Follow these detailed steps to ...



Storm control (or traffic suppression) monitors packets passing from an interface to the switching bus and determines if the packet is unicast, multicast, or broadcast.



By default, storm control is disabled on a FortiSwitch unit. When enabled, it measures the data rate (in packets-per-second) for unknown unicast, unknown multicast, and broadcast traffic.

## Contact Us

For more information, pricing, or custom energy solutions, please contact us:

Website: <https://www.gdroofing.co.za>

Email: [sales@gdroofing.co.za](mailto:sales@gdroofing.co.za)

Phone: +27 72 418 9365

Address: 22 Electron Avenue, Isando, Johannesburg, 1600, South Africa

This document is for informational purposes only. Specifications subject to change without notice.

