

Airport-grade CFP8 low-noise



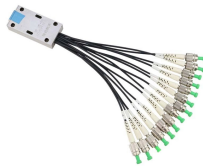
Airport-grade CFP8 low-noise



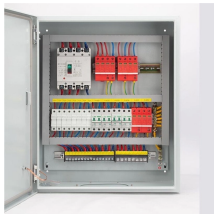
Explore the differences between CFP, CFP2, CFP4, and CFP8 optical transceivers, including size, power usage, bandwidth, and DSP integration.



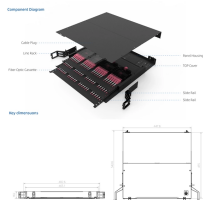
The riding heat sink and host cage top surface designs given in the latest published CFP8 baseline drawing are only exemplary and are not required for compliance with the CFP8 MSA.



The ONT-600 400G CFP8 Module is a three-slot module and is compatible with the ONT-603, -606 and -612 mainframe products. The module is adequately powered and cooled by the mainframe.



From CFP to CFP8, each generation represents a major step forward in data rate, power efficiency, and port density. In this article, we'll explain the key differences between CFP, CFP2, ...



By integrating de-multiplexing capabilities for 8 wavelengths in a package, we have developed a 400 Gbit/s optical receiver module with n integrated 8-ch optical de-multiplexer for CFP8, which has a low ...



K400 CFP8-R400GE: A reduced-featured model with 1-port, 2-slot, native CFP8 400GE load module designed for hardware, ASIC, cable/optics qualification, and interoperability testing. The CFP8 ...



CFP transceivers include pluggable CFP, CFP2, CFP4 and CFP8 transceiver modules. CFP8 module delivers four times more bandwidth than earlier 100G solutions.



In this paper, we present a successful demonstration of the 400GE physical interface card (PIC) integrated in the core internet protocol/multi-protocol label switching (IP/MPLS) router, with the CFP8 ...



We are the global leader in data center test solutions, such as loopbacks and compliance boards. Copyright MultiLane © 2026 reserves the right to make changes to its product specifications at any ...



Finisar's FTCD1314E1BCL 400G CFP8 transceiver modules are designed for use in 400 Gigabit Ethernet interfaces over single mode fiber. They are compliant with the CFP MSA1, IEEE P802.3bs ...

Contact Us

For more information, pricing, or custom energy solutions, please contact us:

Website: <https://www.gdroofing.co.za>

Email: sales@gdroofing.co.za

Phone: +27 72 418 9365

Address: 22 Electron Avenue, Isando, Johannesburg, 1600, South Africa

This document is for informational purposes only. Specifications subject to change without notice.

