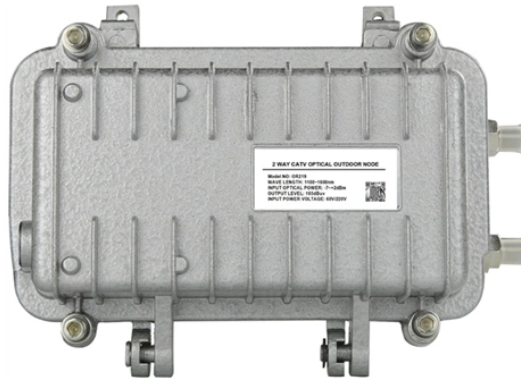


Angola Transparent Optical Cable G 652D



Angola Transparent Optical Cable G 652D



“Leviton is dedicated to designing, developing and manufacturing sustainable high performance structured cabling and specialty cabling solutions.”
The information contained in this document is ...



G.652.D Single-Mode Optical Fibre Specifications
... *Values for cabled fibre, local attenuation discontinuity $\leq 0.1\text{dB}$ Note: Due to OTDR measurement uncertainty B3 International cannot guarantee ...



For network planners, project managers, and procurement specialists, understanding the G.652D fiber specification, current G.652D fiber price factors, and selecting reputable optic fiber ...



Our Single-Mode Bare Optical Fiber is drawn and coated for consistent geometry and low loss, ensuring splice compatibility and stable network performance in production and R& D environments.



ITU-T Compliance Meets or exceeds ITU recommendations for G.652.D and the IEC60793-2-50 type B1.3 Optical Fiber Specification



Explore the differences between G.652.D, G.657.A1, and G.657.A2 fiber optic cable specifications. Learn about their unique characteristics, bend performance, and applications to make ...



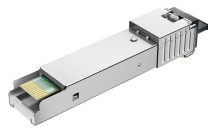
For network planners, project managers, and procurement specialists, understanding the G.652D fiber specification, current G.652D fiber ...



Explore our G.652D ADSS fiber optic cable, featuring 6 cores and a 200m span for aerial communication networks. Designed for high tensile strength, self-supporting installation, and outdoor durability, ideal ...



G.652D Optical Fiber is ideally designed for use in metropolitan, local and access networks due to its superior specifications-low optical loss across the entire wavelength range from 1260 to 1625nm, ...



Properties of cable with standard Enhanced SM fibre ESMF, low water peak single mode fibre G652D, OS2

Contact Us

For more information, pricing, or custom energy solutions, please contact us:

Website: <https://www.gdroofing.co.za>

Email: sales@gdroofing.co.za

Phone: +27 72 418 9365

Address: 22 Electron Avenue, Isando, Johannesburg, 1600, South Africa

This document is for informational purposes only. Specifications subject to change without notice.

