

# Anti-Trace Configuration Scheme for Telecom Chassis



## Overview

AdvancedTCA is an open, modular embedded computing standard originally developed for telecom and networking systems. It specifies chassis, backplanes, power architectures, and robust cooling to support high-availability, high-performance computing in demanding environments. 0 - Digital cellular telecommunications system (Phase 2+) (GSM); Universal Mobile Telecommunications System (UMTS); LTE; Telecommunication management; Subscriber and equipment trace; Trace control and configuration management (3GPP TS 32. 0 Release 13) ETSI TS 132. Specifications and reports for implementation of the 3GPP TM system should be obtained via the 3GPP Organizational Partners' Publications Offices. Keywords UMTS, management 3GPP Postal address 3GPP support office address 650 Route des Lucioles - Sophia Antipolis Valbonne - FRANCE Tel. : +33 4 92 94. Session Tracing allows an operator to trace subscriber activity at various points in the network and at various levels of detail in an EPS network. This chapter provides information on how the MME implements subscriber Session Tracing functionality in the LTE service. Chassis Ground is a protective ground that connects all metal parts to the earth ground. It is geared toward

achieving first pass design success.

## Anti-Trace Configuration Scheme for Telecom Chassis



The trace control and configuration parameters of the Trace Session are received in Trace Session activation from the EM. The RNC shall not forward these trace control and configuration parameters ...



The definition of Trace and MDT data is intended to result in comparability of Trace and MDT data produced in a multi-vendor wireless UMTS, EPS and/or 5G network(s), for those Trace control and ...



AdvancedTCA is an open, modular embedded computing standard originally developed for telecom and networking systems. It specifies chassis, backplanes, power architectures, and robust cooling to ...



The definition of Trace and MDT data is intended to result in comparability of Trace and MDT data produced in a multi-vendor wireless UMTS and/or EPS network(s), for those Trace control and ...



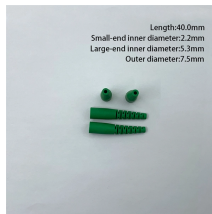
AN91445 explains antenna design in simple terms and provides guidelines for RF component selection, matching network design, and layout design.



This section provides the configuration example to configure the trace file collection parameters and protocols to be used to store trace files on TCE through FTP/S-FTP:



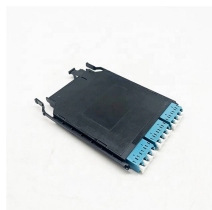
If possible, connect the chassis ground to the earth ground via a single point within the system so that the excess current can safely travel to earth; this protects the device from unwanted current surges, ...



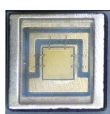
This document provides useful guidelines for the design and layout of printed circuit boards utilizing the VSC8541 and VSC8531 Single Port Gigabit Ethernet PHY and the VSC8540 and VSC8530 Single ...



The following trace control and configuration parameters of the Trace Session are received by eNodeB in the Trace Session activation message from the EM: - Trace Reference - Trace Depth - E-UTRAN ...



These trace parasitics usually enforce the further decrease in values of matching elements (series inductance and parallel capacitance). There are three approaches to simulating PCB parasitics: ...



Remedial Action Schemes (RAS), also known as Special Protection Systems (SPS) or System Integrity Protection Schemes (SIPS), are widely used to provide automatic mitigation of performance ...

## Contact Us

For more information, pricing, or custom energy solutions, please contact us:

Website: <https://www.gdroofing.co.za>

Email: [sales@gdroofing.co.za](mailto:sales@gdroofing.co.za)

Phone: +27 72 418 9365

Address: 22 Electron Avenue, Isando, Johannesburg, 1600, South Africa

This document is for informational purposes only. Specifications subject to change without notice.

