

## Are all fiber optic cables in routers fused together



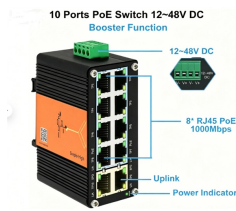
### Overview

The fiber optic cable does not plug directly into a standard home router because the signal type must be translated. The fiber line terminates at the Optical Network Terminal (ONT), which is typically supplied and installed by the internet service provider. Functioning as a translator, the ONT converts optical signals from the fiber optic cable into electrical signals that. Splice Closures: These are weatherproof enclosures where fiber optic cables are joined together. This is a highly skilled process requiring specialized equipment and clean environments. They ensure precise alignment of the fiber ends.

## Are all fiber optic cables in routers fused together



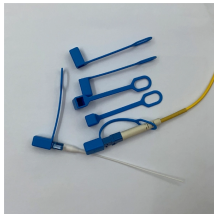
Explore how fiber optic internet is installed in your home, with step-by-step details on cables, ONTs, routers, and what to expect during the appointment.



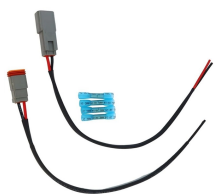
However, setting up a fiber optic connection to your router can seem daunting if you're unfamiliar with the process. In this guide, we'll walk you through how to connect a fiber optic...



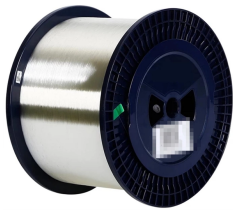
Learn the essential hardware bridge and sequential steps needed to link the optical line to your router.



Fusion splicing is a process of aligning the fibers from the fiber optic cables and then connecting them together. This is a welding process for fiber optic strands. In this process, the fiber ...



By following this detailed guide, you've not only learned how to connect fiber optic cable to router properly but also how to optimize and maintain that connection for peak performance.



From the backbone fiber optic cables spanning vast distances to the router and ONT in your home, the synergy of these components empowers ISPs to provide ultra-fast internet speeds ...



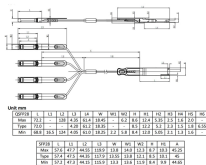
The two primary industry-accepted methods for fiber optic cable splicing are fusion splicing and mechanical splicing. The choice between them depends on performance requirements, ...



Adapters, also known as couplers or splices, are used to join two fiber optic connectors together or to connect a cable to a piece of equipment. They ensure precise alignment of the fiber ends.



Learn about the fiber optic cable operating principle, types, connectors, method of joining and fusion splicing.



Splice Closures: These are weatherproof enclosures where fiber optic cables are joined together. Each individual strand of fiber within a cable is meticulously fused or mechanically connected to another ...

## Contact Us

For more information, pricing, or custom energy solutions, please contact us:

Website: <https://www.gdroofing.co.za>

Email: [sales@gdroofing.co.za](mailto:sales@gdroofing.co.za)

Phone: +27 72 418 9365

Address: 22 Electron Avenue, Isando, Johannesburg, 1600, South Africa

This document is for informational purposes only. Specifications subject to change without notice.

