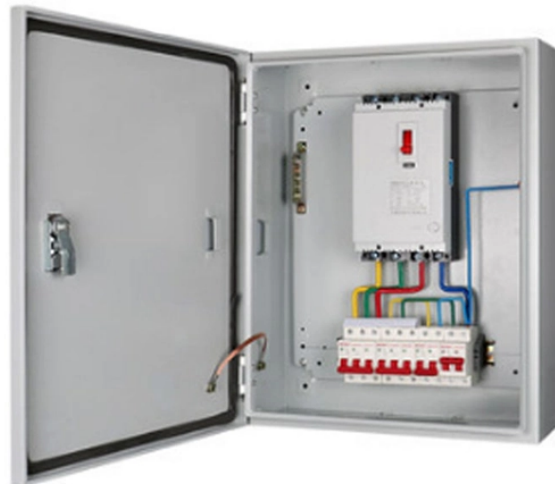


Asian Cast Aluminum Explosion-proof Lighting Distribution Box



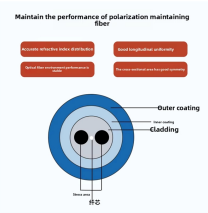
Asian Cast Aluminum Explosion-proof Lighting Distribution Box



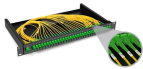
Dust-Proof and Waterproof Design: This explosion-proof lighting distribution box is designed with a dust-proof and waterproof aluminum body, ensuring reliable operation in harsh environments, such as ...



Our organization have been actively engaged in exporting and distributing a premium quality Custom IP65 Explosion Proof Power Distribution Box With Cast Aluminum in Ningbo, Zhejiang, China.



This type of distribution box is made of cast aluminum alloy material, which has the advantages of light weight, high strength, and corrosion resistance. The surface is usually treated with electrostatic ...



Introduce: This product is explosion proof distribution box. We use the process of die casting to make it. At the same time, we can make it use aluminum, or SMC or iron or stainless steel material. We ...



- Certified explosion-proof mark Ex d IIB T6 Gb, compliant with IECEx and ATEX standards.
- Customizable sizes, materials, and internal components to meet specific project requirements.
- ...



Warom Group is a leading manufacturer of explosion-proof lighting and electrical equipment in China. We provide certified explosion-proof luminaires, control de



The outer casing of the product is cast aluminum alloy ZL102. Adopting one-time die-casting process, the surface is smooth, the appearance is beautiful, the internal structure is high in density, the impact ...



The sealing strip adopts the advanced technology of cast-in-place foaming one-time forming, with high protection performance; racket. For outdoor use, rainproof cover or protective cabinet can b added. ...



Our explosion-proof junction boxes in Singapore are made from die-cast aluminium, GRP, and stainless steel, making them suitable for use in any hazardous areas, particularly in the chemical, oil refining, ...



This product is constructed from a robust cast aluminum explosion-proof distribution box, ideal for a variety of power and lighting circuits. It delivers safe and reliable power distribution solutions.

Contact Us

For more information, pricing, or custom energy solutions, please contact us:

Website: <https://www.gdroofing.co.za>

Email: sales@gdroofing.co.za

Phone: +27 72 418 9365

Address: 22 Electron Avenue, Isando, Johannesburg, 1600, South Africa

This document is for informational purposes only. Specifications subject to change without notice.

