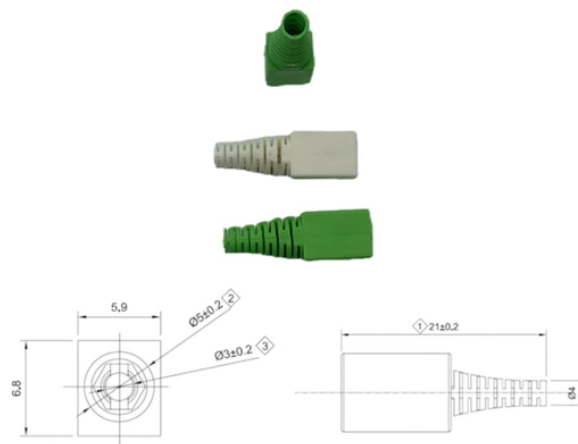


At which level of distribution box is the electricity meter installed



Overview

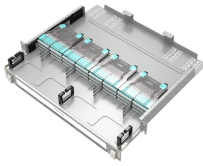
Customer installs meter base/meter panel 5 feet (from centerline of meter opening) above finished grade or floor. Keep it within 3 meters of the main electrical panel to avoid long cable runs and voltage drop. Choose a dry, accessible, well-ventilated spot —avoid damp basements, tight corners, or direct sun exposure. Follow local building codes and utility provider requirements for mounting height, enclosure. The National Electric Safety Code requires an unobstructed working space that extends from the floor or ground to a minimum height of 6 feet, 6 inches. For electrical equipment mounted higher than 6 feet, 6 inches, this space shall extend to the top of the equipment. For underground service. PPL EU's standard practice is to locate all meters outdoors. Customer installs meter base/meter panel 5 feet (from centerline of meter. Distribution boards (generally only one in residential premises) usually include the meter (s) and in some cases (notably where the supply utilities impose a TT earthing system and/or tariff conditions which limit the maximum permitted current consumption) an incoming supply differential. The National Electrical Code (NEC) provides comprehensive safety standards for electrical installations, including requirements for electrical panels (main

service panels and subpanels or breaker box). NEC Article 408 covers switchboards, switchgear, and Panelboards installation and applications.

At which level of distribution box is the electricity meter installed



In the UK: The maximum height is 1800mm between the box's top and the ground level. The minimum height is 450mm between the bottom of the box and the ground. They discourage consumers from ...



The box should be mounted on the outside of the building, but in cases in which it's impossible to do this and meet all the code requirements, it can be mounted inside. All electrical ...



Clearance: Electrical panels must be installed in a readily accessible area with a minimum clearance of 30 inches (762 mm) wide, 3 ft (36 inches or 914 mm) deep, and 6.5 feet (\approx 2 meter) high in front of ...



Meter base/panel installations shall be in the basement or on the ground floor. Meter bases/panels may not be installed near furnaces or in rooms where excessive heat, moisture, acid fumes or dust are ...



The installation height of the meter box and small power distribution unit usually needs to be determined according to local electrical codes and standards to ensure safety and easy reading.



In general, meters shall not be installed above the first story level or below the first basement level of a building. Space and clearance requirements for indoor metering installations are the same as for ...



To stay within code and utility standards, your electric meter box should be mounted so that the center of the meter sits approximately: Between 3.5 and 6 feet above ground level



The National Electric Safety Code requires an unobstructed working space that extends from the floor or ground to a minimum height of 6 feet, 6 inches. For electrical equipment mounted higher than 6 feet, ...



Electrical equipment used in residential premises are commonly certified by third party ensuring conformity with the relevant standards. In this case, equipment shows the certification Mark ...



Learn where to install your electrical meter box for safety, easy access, and regulation compliance with expert tips and maintenance advice.

Contact Us

For more information, pricing, or custom energy solutions, please contact us:

Website: <https://www.gdroofing.co.za>

Email: sales@gdroofing.co.za

Phone: +27 72 418 9365

Address: 22 Electron Avenue, Isando, Johannesburg, 1600, South Africa

This document is for informational purposes only. Specifications subject to change without notice.

