

## BBU and RRU Single-Core Optical Modules



### Overview

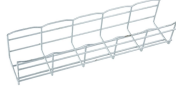
The base station can be divided into two modules: the RRU for transmitting signals and the BBU for processing signals. Because the base station is divided into two parts to work. Optical modules used in Remote Radio Units (RRUs) for CPRI applications are required to support industrial temperature ranges, primarily because RRUs operate in diverse outdoor environments with extreme temperature variations. CPRI (Common Public Radio Interface) defines the interface relationship. AAU, RRU, and BBU are key components in a telecom network, particularly in modern wireless communication systems like 4G and 5G. Here's a breakdown of each: The central processing unit in a base station. Usually. For the 2025 holiday season, eligible items purchased between November 1 and December 31, 2025 can be returned until January 31, 2026. See more product details Would you like to tell us about a lower price?

Found a lower price?

Let us know. Think modulation and demodulation, error correction stuff, plus

managing protocols across different layers including PDCP, RLC, and RRC.

## BBU and RRU Single-Core Optical Modules



In this blog, ETU-LINK will talk about 4G base stations and common types of optical modules. The base station can be divided into two modules: the RRU for transmitting signals and the BBU for processing ...



In the 5G era, not only is the RRU and the antenna integrated into an AAU, but the physical structure of the BBU has also evolved into a CU (centralized unit) and DU (distributed unit) ...



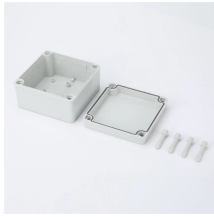
Discover how BBU and RRU work together via CPRI/eCPRI for efficient 5G signal transmission. Learn about functional splits, latency control, and O-RAN advantages.



Integrates the RRU and antenna into a single unit. Used mainly in 5G networks to support massive MIMO (Multiple Input Multiple Output). Enhances signal strength and coverage, ...



Here's the sequence of how signals travel from an antenna to the Baseband Unit (BBU), including key information about each step and associated hardware.



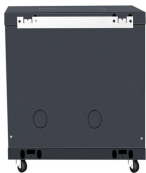
These modules are installed between the BBU and RRU, converting high-speed electrical signals into optical signals for transmission via fiber, and back to electrical signals at the destination. ...



To support the rising number of sites and carriers, more optical fiber resources must be available for fronthaul. 5G fronthaul optical modules, which are currently available in many forms, ...



In 4G wireless networks, the two core units of the CPRI architecture are the BBU (Building Baseband Unit, indoor baseband processing unit) and the RRU (Remote Radio Unit).



The document provides an overview of wireless base station products, detailing various components such as BBUs, RRUs, and their specifications. It includes ...



Product Summary: YCMIDCL 10G Single-Mode Single-Fiber Optical Module Single core 20KM 40 80KM SFP-10G-BX10 Single-Fiber bidirectional RRU BBU (10km one Pair) From YCMIDCL

## Contact Us

For more information, pricing, or custom energy solutions, please contact us:

Website: <https://www.gdroofing.co.za>

Email: [sales@gdroofing.co.za](mailto:sales@gdroofing.co.za)

Phone: +27 72 418 9365

Address: 22 Electron Avenue, Isando, Johannesburg, 1600, South Africa

This document is for informational purposes only. Specifications subject to change without notice.

