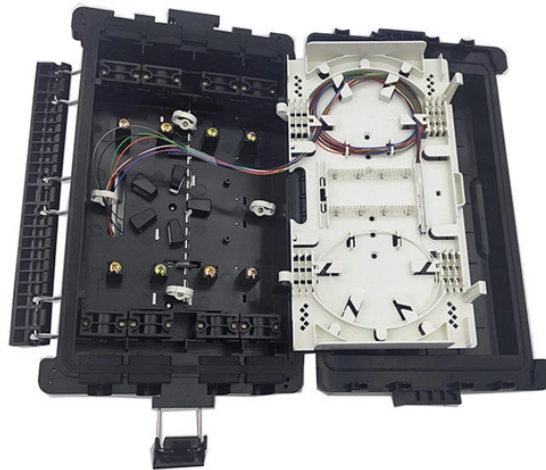


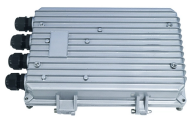
Barrier Gate System Server Rack



Barrier Gate System Server Rack



Shop Cisco-Eagle for industrial strength guard rails, gates, safety barriers, bollards and more for warehouses, factories and industrial facilities.



Delta's vehicle barrier control systems allow you to effectively operate wedge barricades, beam barricades, retractable bollards, and sliding gates. Hydraulic, pneumatic, and electromechanical ...



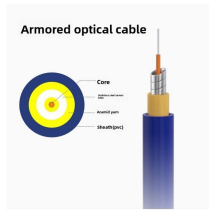
At CLD, our fencing solutions are intricately designed to safeguard these facilities, offering a protective barrier that prioritizes security without compromising the functionality and accessibility of data center ...



This rack-supported safety gate provides full-time protection for elevated work areas. The RacKeeper® Safety Gate is perfect for multilevel pick modules or any other elevated work area that requires fall ...



Hot and cold air containment systems designed to maximize cooling predictability, capacity, and efficiency at the rack, row or room level. Intelligent air containment solutions that protect critical IT ...



Separate, secure, or store valued items with this easy to install system. Use twenty standard sized panels and steel support posts to build partitions, enclosures, or storage areas of any size or ...



Need Help Finding an Industrial-Grade Network or Server Rack? Tripp Lite carries a broad range of floor-standing and wall mount rack enclosures. Whether you need server racks for a data center or a ...



WireCrafters designs our Server Cage system with all of the hardware on the inside of the enclosure. With hardware only accessible from the inside of the secured area, security is guaranteed.



The BG790 Industrial-Duty Wishbone Arm Barrier Gate Operator is ideal for airports, parking garages, and manufacturing plants. This barrier can reduce the occurrence of accidents due to dock ...



The RackBack panel bolts directly to your existing pallet rack uprights creating a sturdy barrier between inventory and the ground below. Durable all welded, angle frame panels give constant protection ...

Contact Us

For more information, pricing, or custom energy solutions, please contact us:

Website: <https://www.gdroofing.co.za>

Email: sales@gdroofing.co.za

Phone: +27 72 418 9365

Address: 22 Electron Avenue, Isando, Johannesburg, 1600, South Africa

This document is for informational purposes only. Specifications subject to change without notice.

