

Bridge in the building



Overview

Broadly, there are seven types of bridges according to the engineering approach: Culverts: Simple structures under or beside roads for water drainage, preferred for their cost-effectiveness. Slab: Often concrete, with minimal design elements. Beam: Simple and affordable, often used. There are very few bridges with buildings in the world. This list attempts to identify all the existing ones and notable former ones featuring significant closed commercial, residential, governmental, or religious worship structures. Architects: Want to have your project featured?

Showcase your work by uploading projects to Architizer and sign up for our inspirational newsletters. In the complex world of infrastructure development, the construction of bridges stands out for its unique set of challenges and requirements. As vital arteries that connect communities and facilitate commerce, bridges are marvels of modern engineering that require careful planning and adept. Golden Gate Bridge, San Francisco Fog enveloping the Golden Gate Bridge, which spans the entrance to San Francisco Bay in northern California.

Bridge in the building

LoRa handheld portable base station



This collection reveals the growing embrace of inhabitable bridges, illuminating the ways in which these bridge-buildings create connections across environments ...



Find local businesses, view maps and get driving directions in Google Maps.



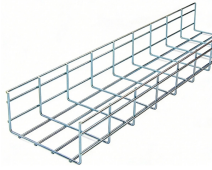
Explore some of the myriad ways bridge construction is unique — and what to consider at each phase of the project.



Incredible location overlooking the Cumberland River with a perfect view of downtown Nashville. The venue is on multiple levels, each with a different vibe. Outdoor areas exist on the first floor and the ...



Golden Gate Bridge, suspension bridge spanning the Golden Gate in California to link San Francisco with Marin county to ...



Today, technological advances have made it possible to erect bridges that are both impressive and sculptural, playing a key role in transportation and connectivity.



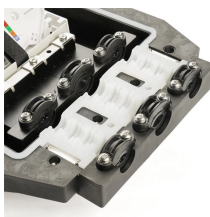
Most bridges consist of a flat deck, supported by beams, arches, or cables. These structures rest on a foundation that is carefully designed to transfer the weight of the bridge to the subsoil without settling.



This collection reveals the growing embrace of inhabitable bridges, illuminating the ways in which these bridge-buildings create connections across environments and our collective imaginations, pushing ...



There are very few bridges with buildings in the world. This list attempts to identify all the existing ones and notable former ones featuring significant closed commercial, residential, governmental, or ...



The bridge extends over San Fernando Street to connect the new Founder's Tower of Adobe's headquarters to the existing campus, enhancing accessibility and promoting a walkable environment.



A bridge is a structure that spans horizontally between supports, whose function is to carry vertical loads. Generally speaking, bridges can be divided into two ...



Golden Gate Bridge, suspension bridge spanning the Golden Gate in California to link San Francisco with Marin county to the north. Upon its completion in 1937, it was the tallest and ...



A bridge is a structure that spans horizontally between supports, whose function is to carry vertical loads. Generally speaking, bridges can be divided into two categories: standard overpass bridges or ...

Contact Us

For more information, pricing, or custom energy solutions, please contact us:

Website: <https://www.gdroofing.co.za>

Email: sales@gdroofing.co.za

Phone: +27 72 418 9365

Address: 22 Electron Avenue, Isando, Johannesburg, 1600, South Africa

This document is for informational purposes only. Specifications subject to change without notice.

