

## Bttz installation does not require cable trays



### Overview

Answer: Metallic cable trays are not required to be listed because they are a support system. Compliance with other appropriate NEC cable articles is required. When installing multiple sizes of conduit, MC/AC cable or cable tray for your construction projects, make sure you have the products that will keep you on budget and within your deadlines. Up to 50% quicker installation than traditional strut trapeze Conduit holes automatically align conduits across trapeze B-Line series. WBT has pioneered the innovation of cabletray/basket tray in the last decade. Products such as Shaped Tray, PreForm, WBTForm and NoSplice have allowed users and installers to provide cleaner, faster and better engineered installs. ● Excellent electromagnetic shielding performance and electromagnetic compatibility.

## Bttz installation does not require cable trays



The BTTZ cable is of high quality, with a high rigidity solid conductor. Its installation is complex due to the number of connectors required and the rigorous specifications of the installation ...



The B-Line series from Eaton has developed a conduit trapeze support (BCTS) system that can reduce your installation times by up to 50% and your parts by up to 75%.



General installation of WBT PreForm uses the Washer Supt Plus Method of attachment. The installer may add a splice kit attachment between the polymer sides and the tray sides but it is not necessary.



This article provides a comprehensive framework that governs various aspects of cable tray installations, including the types of cables that are deemed acceptable for use, requirements for ...



Answer: Yes; cables are tied down in cable trays to keep the cables in the cable tray, to maintain spacing between cables, or to segregate or confine certain types of cables to specific locations.



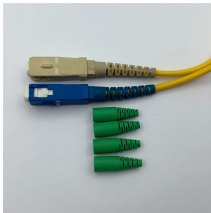
This versatile Z-shaped design supports multiple sizes and types of conduit, MC/AC cable, cable tray and attachment of other accessories such as electrical boxes.



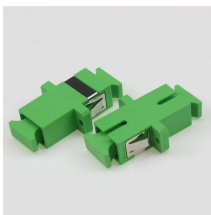
J-hooks and cable trays are integral components in BICSI-compliant communication pathways, each offering unique benefits to ensure efficient, scalable, and reliable cabling infrastructures.



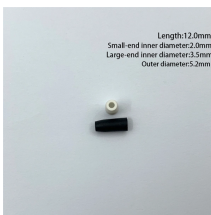
This article provides a comprehensive framework that governs various aspects of cable tray installations, including the types of cables that are deemed acceptable for use, requirements for ...



However, not all installations require cable trays, and it's essential to understand when and why you should use them. In this article, we'll discuss the main factors that determine whether or ...



This document provides instructions for installing BTS equipment both indoors and outdoors. Indoor installation includes setting up cable trays, grounding bars, battery banks, SMPS power supplies, ...



Length:12.0mm  
Small-end inner diameter:2.0mm  
Large-end inner diameter:3.5mm  
Outer diameter:5.2mm

Small cable outer diameter, easy installation, low overall cost, no need to protect the cable through the pipe. Good explosion-proof performance and excellent resistance to nuclear radiation.

## Contact Us

For more information, pricing, or custom energy solutions, please contact us:

Website: <https://www.gdroofing.co.za>

Email: [sales@gdroofing.co.za](mailto:sales@gdroofing.co.za)

Phone: +27 72 418 9365

Address: 22 Electron Avenue, Isando, Johannesburg, 1600, South Africa

This document is for informational purposes only. Specifications subject to change without notice.

