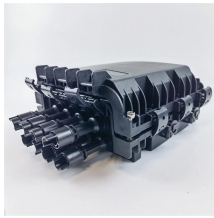


Bus trunking distribution cabinet specifications



Bus trunking distribution cabinet specifications



PMAX H is a patented range of busbar trunking that is utilised within building and industrial applications to deliver power to electrical loads. It is an alternative to traditional cabling and provides numerous ...



The Vertiv™ Powerbar busway system patented range of busbar trunking adds overhead power distribution to your data center, allowing increased accessibility to power loads for maintenance.



Square D™ brand I-Line™ Busway, manufactured by Schneider Electric, offers a complete line of compatible, sandwich-type feeder and plug-in busway lengths and fittings.



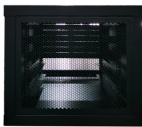
This catalog includes information on features, construction, application, installation, electrical data, busbar configuration, wiring diagrams, and dimension drawings for Busway Systems.



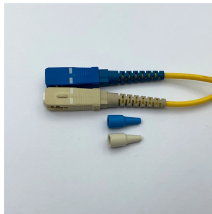
Busbar trunking systems are sandwich systems compatible with complex low voltage energy distribution lines. Feeder and Plug-in types allow easy attachment to each other.



For this reason, busbar trunking systems rather than the cable installation method are being used more and more often by engineering offices for the transmission and distribution of power.



The object for this guide is to provide an easily understood document, aiding interpretation of the requirements to which Busbar Trunking Systems are designed and how they should be safely ...



Technical specifications The technical specifications are for general information purposes only. Always heed the operating instructions and notices on individual products during assembly, operation and ...



Pmax series bus duct is ideal for use in airports, rail transit projects, data centers, large shopping malls, hospitals, industrial plants and other projects as an effective high-current power distribution system.



The Standard lists the mechanical and electrical requirements with which the busbar trunking must comply and provides the methods for verifying these requirements.

Contact Us

For more information, pricing, or custom energy solutions, please contact us:

Website: <https://www.gdroofing.co.za>

Email: sales@gdroofing.co.za

Phone: +27 72 418 9365

Address: 22 Electron Avenue, Isando, Johannesburg, 1600, South Africa

This document is for informational purposes only. Specifications subject to change without notice.

