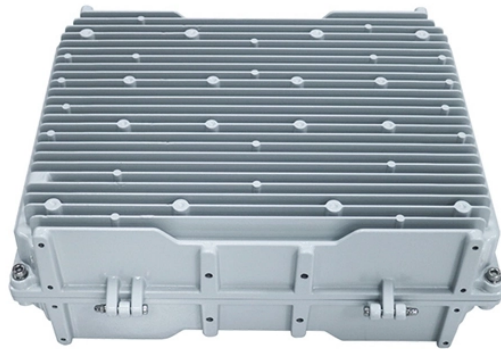


Busbar terminals



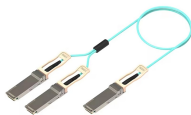
Busbar terminals



Discover our automotive busbars and terminal blocks to consolidate wiring and distribute power in a cost-effective manner. Screw and stud terminals available.



High voltage rigid and flexible (braid or laminated) busbars and custom terminals/lugs for any application. Copper and Aluminum. Custom geometry with overmolded features for securement, ...



Mouser offers inventory, pricing, & datasheets for Busbar Barrier Terminal Blocks.



Terminal Block Busbars This email address is associated with more than one company. Please select the company you'd like to login to to continue:



Low-cost and flexible, the 12 point terminal busbar offers (12) 15amp connections, with a single 1/4" connection post. The 12 point busbar can be used with a cover, protecting the connection points and ...



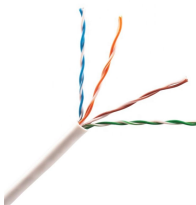
Our busbars can be combined with fasteners of all shapes and sizes but when combined with our HPLB (High-Power Lock Box) terminal we can eliminate all loose fasteners and provide a self-aligning, ...



Explore durable bus bar terminal blocks with screw and stud terminals. Perfect for organizing electrical circuits safely and efficiently.



Search our portfolio of Busbars & Terminals products and select your specifications. We offer a wide array of reliable and cost-effective products from standard solutions to custom designs.



These bars are tin-plated copper and have stainless steel terminals. Also known as bus bars, they serve as connection points between wires with ring or spade terminals. The underside is sealed, so the ...



Shop our selection of terminal busbars designed for high-current distribution and multi-point electrical connections. These busbars support 3 to 30 connection points and handle up to 750 amps, making ...

Contact Us

For more information, pricing, or custom energy solutions, please contact us:

Website: <https://www.gdroofing.co.za>

Email: sales@gdroofing.co.za

Phone: +27 72 418 9365

Address: 22 Electron Avenue, Isando, Johannesburg, 1600, South Africa

This document is for informational purposes only. Specifications subject to change without notice.

