

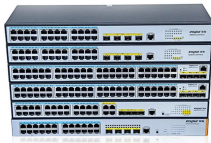
Busline Distribution Box Installation



Busline Distribution Box Installation



Thanks to an innovative design, you benefit from labor-saving installation and a flexible, compact bus system that is an ideal fit for most applications. In fact, Sentron Busway is one of the industry's least ...



With Starline Track Busway, powering your projects is faster and easier. You can add, remove, or relocate power without downtime, ensuring your operations are up and running quickly and ...



INSTALLATION 7.1 The contractor shall install Track Busway in accordance with the manufacturer's instructions. **7.1.1** Track Busway runs shall consist of lengths as shown on the drawings. **7.1.2** The ...



Upon receipt of a Vertiv™ Liebert® MBX Busway System, the installer should perform the following steps to ensure a top-quality installation. Inspect the shipment for damage or signs of mishandling ...



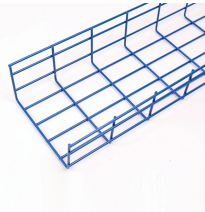
This catalog includes information on features, construction, application, installation, electrical data, busbar configuration, wiring diagrams, and dimension drawings for Busway Systems.



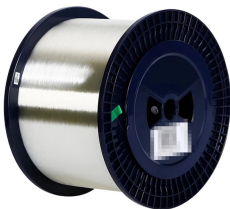
Installing cable and conduit is complex, labor-intensive work that only highly specialized electricians can perform. Busway, by contrast, is a far simpler technology that most electricians with basic ...



This publication contains instructions for the storage, handling, installation, and maintenance of the Eaton Pow-R-FlexE busway. Only those qualified and trained in accordance with established safety ...



Tools needed to install Busway: Installation tool (provided), 17mm open end wrench and a slotted head screw driver Two men are needed to install a 6m. section of the Busway.



track busway system, hereafter referred to as Track Busway. The system shall be designed primarily for overhead power distribution of electrical power. Once installed, the Track Busway will provide simple, ...



These requirements apply as long as applicants complete the approved projects within 18 months.



Carefully read the installation instructions for all devices and NEMA Publication BU 1.1 provided with the busway before installing any of the equipment. This will help ensure proper installation and operation ...

Contact Us

For more information, pricing, or custom energy solutions, please contact us:

Website: <https://www.gdroofing.co.za>

Email: sales@gdroofing.co.za

Phone: +27 72 418 9365

Address: 22 Electron Avenue, Isando, Johannesburg, 1600, South Africa

This document is for informational purposes only. Specifications subject to change without notice.

