

## Busway Connection Box High Voltage Busbar



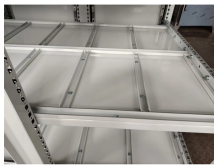
## Busway Connection Box High Voltage Busbar



These board-to-busbar connectors are designed to meet OCP V3 power distribution architecture standards and are ideal for use in power shelves, BBUs, server/storage sleds, EV ...



This 11kV busbar enclosure is designed to safely carry high-voltage supplies with extreme current loadings in Zone 1 & 21 hazardous areas. The enclosure is suitable for larger crimp lugs (16mm<sup>2</sup> to ...



A complete power solution for transformer to main panel board connections. Vertiv™ PowerBar HPB is a 1000V totally encased, non-ventilated and low impedance busbar.



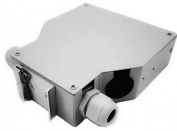
To connect various high voltage (HV) components to the HV system, we also deliver a wide variety of busbars. In cooperation with the customer, these can also feature our Bus Bar Insulation Tubing (BBIT).



Robust HV busbar and enclosed busbar solutions up to 35kV, designed for substations, mining, and offshore platforms. Dust-proof, moisture-resistant, and compliant with IEC/ANSI standards.



The Qwik Flange closing plate closes the gap between the busway and the top of the gear. If a separate Qwik Flange or closing plate kit is needed, the catalog numbers can be created by adding the suffix ...



The KX-III Busway is designed, with the latest innovative technologies such as special epoxy coating and mono-block joint to have ratings from 400A to 6000A. The customer has the option to use ...



Our busbars can be combined with fasteners of all shapes and sizes but when combined with our HPLB (High-Power Lock Box) terminal we can eliminate all loose fasteners and provide a self-aligning, ...



This catalog includes information on features, construction, application, installation, electrical data, busbar configuration, wiring diagrams, and dimension drawings for Busway Systems.



End tap boxes are non-fusible devices used to connect cable and conduit to the end of a busway run or where busway runs connect without the need for over-current protection.

## Contact Us

For more information, pricing, or custom energy solutions, please contact us:

Website: <https://www.gdroofing.co.za>

Email: [sales@gdroofing.co.za](mailto:sales@gdroofing.co.za)

Phone: +27 72 418 9365

Address: 22 Electron Avenue, Isando, Johannesburg, 1600, South Africa

This document is for informational purposes only. Specifications subject to change without notice.

