

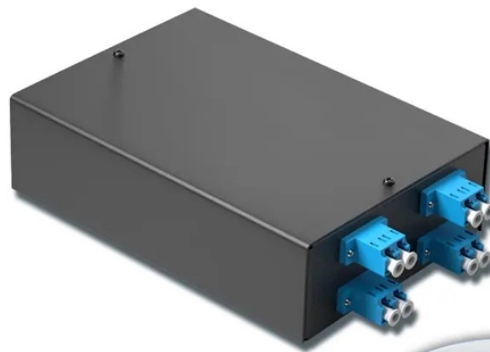
## CT scanner optical module

4-port 8-core LC wall-mounted fiber terminal box (empty frame)

Surface painted

Scientific plate fiber

Cold-rolled steel plate



Lifetime quality assurance

Free shipping

Customizable for telecommunications

## CT scanner optical module



The AS5920M is a 72x24 pixel, four-side buttable module solution for photon counting applied for spectral computed tomography detectors. The 1728-channel proprietary Buttable System-In-Package ...



The sensor can be directly assembled on a substrate using a wire bonding process for manufacturing of a CT module. Superior image quality can be achieved because the input-related noise is very low.



Find many great new & used options and get the best deals for PHILIPS CT Scanner Parts. Module Optical TX Rotor P/N 453567012842 at the best online prices at eBay!



"PHILIPS CT Scanner Parts. Module, Optical FX Stator P/N 453567012852 available for sale in good "... Read more



The AS5920M is a 72x24 pixel, four-side buttable module solution for photon ...



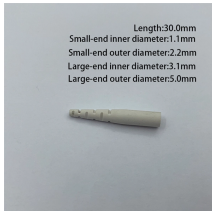
Explore our comprehensive selection of OEM original and replacement parts to keep your healthcare equipment running smoothly.



Buy Optical transmission modules for PHILIPS Brilliance 16 CT Scanner Verified suppliers ↗ New and used spare parts ☐ Order on Bimedis



The 453567030072 Rotor Optical Transmitter Box Module (Optical TX Rotor) is an essential component designed for seamless integration with advanced medical imaging systems such as the Philips ...



AllParts is a multi-modality, multi-OEM provider of CT scanner parts. Quality replacement parts for CT Scanners from Philips, Siemens, and GE.



Part #: 453567012842 Description: MOOG POWER SUPPLY MODULE Brand: PHILIPS Type: CT Scanner



Product tested and in working order.

## Contact Us

For more information, pricing, or custom energy solutions, please contact us:

Website: <https://www.gdroofing.co.za>

Email: [sales@gdroofing.co.za](mailto:sales@gdroofing.co.za)

Phone: +27 72 418 9365

Address: 22 Electron Avenue, Isando, Johannesburg, 1600, South Africa

This document is for informational purposes only. Specifications subject to change without notice.

