

## Cable laying quantity in cable trays



### Overview

Select your tray type (ladder, ventilated trough, solid bottom, or channel), enter the tray width and usable depth, then add cables by size and quantity. The calculator computes the total cable cross-sectional area and compares it against the applicable NEC fill. Properly sizing your cable tray is critical for safety and compliance. Select Fill. Free cable tray fill calculator for electrical designers, plant electricians, and industrial maintenance teams who need to verify that cable installations comply with NEC Article 392 fill requirements. Cable management is the unsung hero of modern infrastructure. The sizing mistake is assuming tray is only a mechanical support system.

## Cable laying quantity in cable trays



The right cable tray sizing calculator helps engineers turn cable schedules into a verified tray width and fill check before material ordering and site installation.



Calculate the appropriate cable tray size based on your cables and fill requirements. This calculator determines if your tray meets industry standards (typically 30-50% fill for alternating single-layer or ...



Enter the dimensions of the cable tray, the desired fill ratio, and the diameter of the cables to calculate the cable tray capacity. This calculator helps determine the maximum number of cables ...



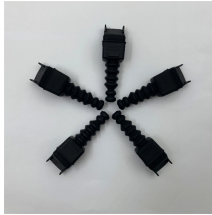
Easily calculate cable tray fill ratios with our free tool. Supports mixed cable sizes, NEC 40% rules, and metric/imperial units. Download your PDF report instantly.



Select your tray type (ladder, ventilated trough, solid bottom, or channel), enter the tray width and usable depth, then add cables by size and quantity. The calculator computes the total cable cross-sectional ...



Ensure your cable runs meet NEC safety standards with our Cable Tray Fill Calculator. Calculate fill ratios for CAT6, Power, and Fiber cables to prevent overheating and inspection failures.



Cable capacity in a tray is calculated by determining the maximum allowable fill area (e.g., 40% of the tray's total area for power cables) and confirming that the total cross-sectional area of all cables does ...



Fill is the amount of tray width or cross-sectional space occupied by cables, which matters because crowded trays trap heat and make maintenance harder. Step-by-Step Cable Tray Sizing ...



The cable tray calculator determines the required tray width and type based on the number and size of cables to be installed, ensuring adequate fill levels and derating compliance.



Ensure your cable runs meet NEC safety standards with our Cable Tray Fill Calculator. Calculate fill ratios for CAT6, Power, and Fiber cables to ...



Learn how to correctly calculate conductor ampacity for single and multiconductor cables in cable trays per NEC 392.80, including derating for fill and configuration.

## Contact Us

For more information, pricing, or custom energy solutions, please contact us:

Website: <https://www.gdroofing.co.za>

Email: [sales@gdroofing.co.za](mailto:sales@gdroofing.co.za)

Phone: +27 72 418 9365

Address: 22 Electron Avenue, Isando, Johannesburg, 1600, South Africa

This document is for informational purposes only. Specifications subject to change without notice.

