

Cable tray 105 downward bend

Powerful manufacturers · 20+ years of experience · Support customization

For more product types, please contact customer service>>>

Customizable

WhatsApp to contact us

Send inquiry

Chat now



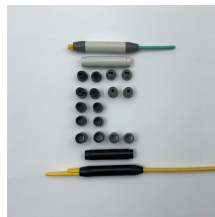
Cable tray 105 downward bend



The quickest up-and-down bends in the industry. Shrink your installation time to just minutes per bend with zero cutting required on thousands of bends in a single project.



The Ladder Tray features light, rugged, tubular steel construction. It is designed for mechanical support and strain relief in long runs of cable and creates a smooth gradual bend for cable. Rail and stringer ...



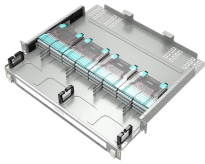
Shop CF105 Cable Tray, Electro-plated, 4 In. X 12 In/, 10 Ft. By Cablofil (Legrand) (CF105/300EZ) At Graybar, Your Trusted Resource For Cable Tray And Other Cablofil (Legrand) Products.



The quickest up-and-down bends in the industry. Shrink your installation time to just minutes per bend with zero cutting required on thousands of bends in a single project.



The quickest up-and-down bends in the industry. Shrink your installation time to just minutes per bend with zero cutting required on thousands of bends in a single project.



Snake Tray® is pleased to announce the new larger size 18-inch wide and 4-inch deep cable tray that creates 72 square inches of cable path to hold over 1000 Cat5e (.21 OD) cables.



Use this guide to learn the most effective installation practices when installing Cablofil tray. Each example of bends and tee's clearly illustrate proper tray cutting combined with recommended usage ...



HellermannTytonGÇÖs low voltage raceway (TSR) is a one piece, non-metallic, adhesive backed, latching raceway designed to aesthetically organize and route communications wires, including high ...



Shop CF105 Cable Tray, Electro-plated, 4 In. X 12 In/, 10 Ft. By Cablofil (Legrand) ...



Chalfant Ladder Cable Tray Systems are ideal for indoor and outdoor cable management. They provide reliability, ease of installation, and cost savings both initially and long term.



In 1996, Roger Jette saw how fabricating generic cable trays slowed down the entire project so he had an idea to create a hand bendable cable tray to substantially lower construction costs and ...



Our cable trays are made of first-class stainless steel (AISI 316 and AISI 304) that prevents corrosion and ensures a good level of resistance. Cable trays from SILTEC are available with a length of 3000 ...

Contact Us

For more information, pricing, or custom energy solutions, please contact us:

Website: <https://www.gdroofing.co.za>

Email: sales@gdroofing.co.za

Phone: +27 72 418 9365

Address: 22 Electron Avenue, Isando, Johannesburg, 1600, South Africa

This document is for informational purposes only. Specifications subject to change without notice.

