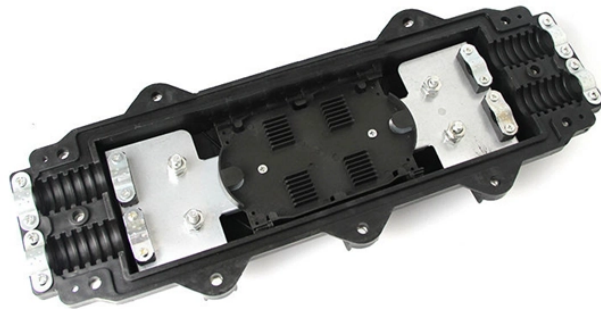

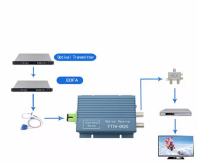


Cable tray 90-degree bend uphill





Cable tray 90-degree bend uphill

<p>Huijue engineering specific Fiber optic HJ GROUP offers a wide variety of product types for you to choose from.</p> 	<p>Features Contains: One Kit contains hardware for one tee or two ...</p>
---	--

	<p>Cable Tray Junction Kit, 90 Degree, Carbon Steel Cable Tray Fitting, 90° Junction Kit. Material: Carbon Steel. Finish: Electroplated Zinc. Includes: (1) Hardware for (1) Tee (2) 90° Bends.</p>
---	---

 <p>Length:33.5mm Small-end inner diameter:5.0mm Large-end inner diameter:6.0mm</p>	<p>Shop 90 Degree Horizontal Bend Cable Trays & Covers from Launch 3. Durable, precision-engineered bends for organized cable management in telecom and industrial projects.</p>
---	--

	<p>Cope I-BEAM horizontal bend for cable tray systems. Compatible with NEMA Classes 12B, 12C, 20A, 20B, 20C, and higher.</p>
---	--

	<p>Shop for Cable Tray - Bends at Platt HellermannTytonGÇÖs low voltage raceway (TSR) is a one piece, non-metallic, adhesive backed, latching raceway designed to aesthetically organize and route ...</p>
---	--



Fittings, cable trays, screw connection - Vertical bends, screw connection.



Features Contains: One Kit contains hardware for one tee or two 90 degree bends. Slotted Design: fits any size tray and eliminates precise tray alignment. UL Classified Splice.



How to make a 90 electrical cable tray bend to measurement of your choice. Great if you are new or just forgot how to do it, this easy ...



Aluminum channel tray bend for cable support with solid or ventilated options. Includes splice plate for easy installation.



This 90 degree tray offers a 24in bend radius for ease of coax installation. Connects to any ASP cable tray with splice clamps provided.



Cable Tray 90° Vertical Inside Bend, 24" Radius, 24" Wide, 6" High, Aluminum

Contact Us

For more information, pricing, or custom energy solutions, please contact us:

Website: <https://www.gdroofing.co.za>

Email: sales@gdroofing.co.za

Phone: +27 72 418 9365

Address: 22 Electron Avenue, Isando, Johannesburg, 1600, South Africa

This document is for informational purposes only. Specifications subject to change without notice.

