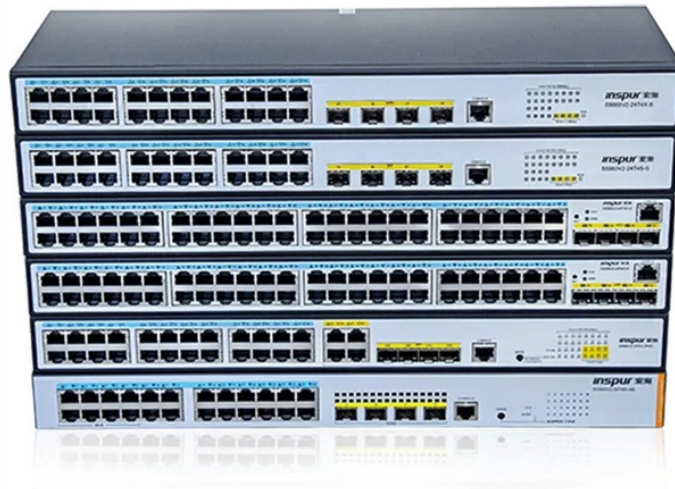


Cable tray bends of varying diameters



Cable tray bends of varying diameters



Our wind certification report provides you with list of acceptable B-Line series cable tray supports, fittings and covers based off of the environmental conditions, cable loading, and type of cable tray in your ...



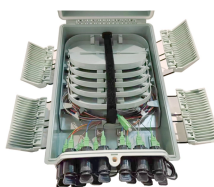
We offer a variety of cable tray flat bends available for light, medium, and heavy duty cable tray systems in varying sizes to suit your requirements.



Heavy Duty 90 Degree Flat Bend 150mm £ 34.96 ex. VAT - £ 41.95 inc. VAT Heavy Duty 90 Degree Flat Bend 150mm Galvanised £ 37.21 ex. VAT - £ 44.65 inc. VAT Heavy Duty 90 Degree Flat Bend ...



When fitting cable trays and their accessories, the products are cut on site to create changes of direction, adjust sections, etc. Damage can also occur during handling; as a result, both the ...



Tables list standard sizes and specifications for straight and bent cable trays, including width, height, thickness, materials, and finishes. Drawings show different bent cable tray types like 90 degree and ...



Cable tray length is selected based on the load to be supported, the distance between the supports (also referred to as the span), and handling and installation constraints.



We will first explain standard cable tray dimensions used across the industry, then examine how dimensions vary by tray type, and finally show how to calculate and select the correct ...



Calculate the minimum required bend radius by multiplying the cable's outside diameter by its bending factor (e.g., 10x for multicore). Then, select a standard tray fitting (300mm, 450mm, etc.) that ...



HellermannTytonGÇÖs low voltage raceway (TSR) is a one piece, non-metallic, adhesive backed, latching raceway designed to aesthetically organize and route communications wires, including high ...



The Ladder Tray features light, rugged, tubular steel construction. It is designed for mechanical support and strain relief in long runs of cable and creates a smooth gradual bend for cable. Rail and stringer ...



We will first explain standard cable tray dimensions used across the industry, then examine how dimensions vary by tray type, and finally show how to ...

Contact Us

For more information, pricing, or custom energy solutions, please contact us:

Website: <https://www.gdroofing.co.za>

Email: sales@gdroofing.co.za

Phone: +27 72 418 9365

Address: 22 Electron Avenue, Isando, Johannesburg, 1600, South Africa

This document is for informational purposes only. Specifications subject to change without notice.

