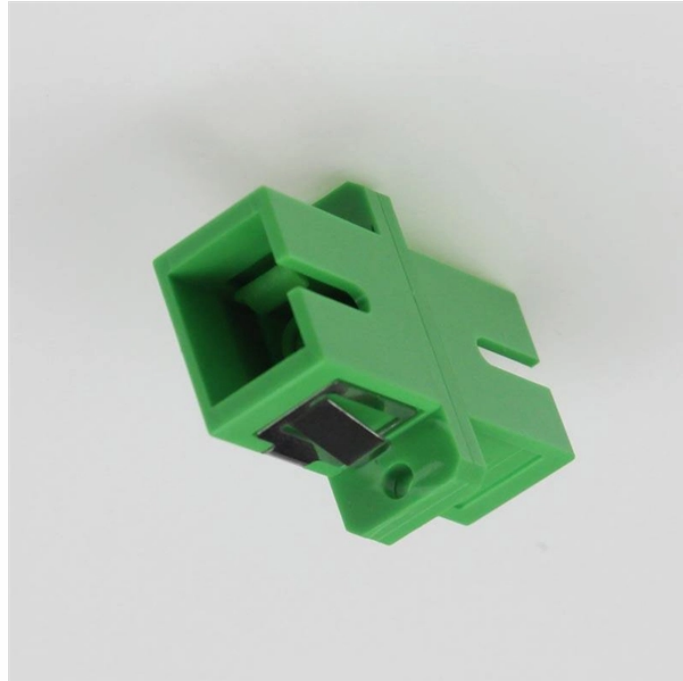


Cable tray dimensions 600x100 elbow



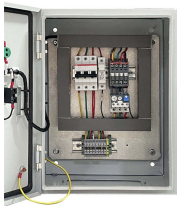
Cable tray dimensions 600x100 elbow



Cable tray length is selected based on the load to be supported, the distance between the supports (also referred to as the span), and handling and installation constraints.



Complete cable tray sizing guide with standard size chart, NEC calculation methods, and real engineering examples. Learn how to select the right cable tray dimensions for your project.



XS Cable Tray SXSP600/100SS Profile Design Perforated Cable Tray System are crafted from high-quality stainless steel. Renowned for its durability, corrosion resistance, and sleek appearance, ...



Even though a 900 mm wide tray has six (6) times the volume of a 150 mm wide tray, it cannot carry any more cable weight. When piling cable in tray, the required air separation between cables can be ...



It calculates the total diameter, weight, and width of the cables and then determines if two example cable tray sizes (300x100mm and 600x100mm) would be suitable based on these parameters as well as ...



Depth (D): 1.2mm, 1.5mm, 2.0mm. Material: Mild steel sheet / PO steel sheet. Constructed Type: MIG welding. er coating / Hot Horizontal Elbow.



Specifies requirements for metal cable trays and associated fittings designed for use in accordance with the rules of Canadian Electrical Code, Part I and the National Electrical Code®



The Ladder Tray features light, rugged, tubular steel construction. It is designed for mechanical support and strain relief in long runs of cable and creates a smooth gradual bend for cable. Rail and stringer ...



A. Submittal Drawings: Submit drawings of cable tray and accessories including clamps, brackets, hanger rods, splice plate connectors, expansion joint assemblies, and fittings, showing accurately ...



For a tray with electrical cable tray dimensions of 300 millimeters width and 100 millimeters depth, the usable area would be approximately 30,000 square millimeters, though actual values ...



We will first explain standard cable tray dimensions used across the industry, then examine how dimensions vary by tray type, and finally show how to ...



We will first explain standard cable tray dimensions used across the industry, then examine how dimensions vary by tray type, and finally show how to calculate and select the correct ...

Contact Us

For more information, pricing, or custom energy solutions, please contact us:

Website: <https://www.gdroofing.co.za>

Email: sales@gdroofing.co.za

Phone: +27 72 418 9365

Address: 22 Electron Avenue, Isando, Johannesburg, 1600, South Africa

This document is for informational purposes only. Specifications subject to change without notice.

