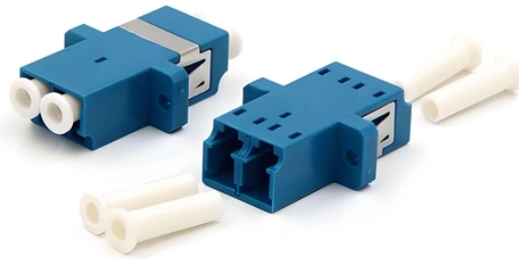


GDR Telecom Site Energy Systems

Cable tray double-sided



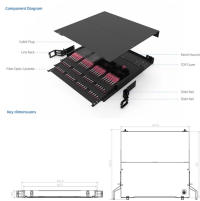
Cable tray double-sided



This 74" double-side cable management rack mount panel is designed to accommodate top, bottom, side, and pass-through cable routing. It easily mounts on standard equipment racks and includes all ...



VERSATILE AND SPACIOUS: Users found the trays to be spacious enough to ...



Organize network infrastructure with CommScope Horizontal and Vertical Cable Management Kits. Sturdy aluminum structures, troughs, spools, and trays keep cables secure and concealed.

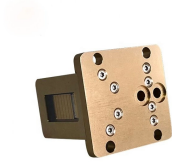


VERSATILE AND SPACIOUS: Users found the trays to be spacious enough to accommodate multiple cables, power strips, and even transformers. The design allows for efficient cable organization ...



J-Hook Trees - Single and Double-Sided J-Hooks are perfect for organizing bundles of cables and wires or supporting conduit. In addition to providing ease of access to cables post-installation, J-Hooks

...



NEXCONEC® 1U/2U Dual-sided plastic cable manager rail is designed for 19-inch rack space. It has 24 slots on the top and bottom to manage cable within a rack or cabinet from the front and back with ...



Experience quick and easy installation with no need for drilling or tools, allowing for a tool-free setup in minutes by simply applying double-sided tape to a smooth, dust-free surface.



This black 12-inch-wide double-sided vertical cable manager organizes and routes fiber, copper and coax cables within an open frame rack in your data center.



Tool-Free, No-Drill Installation: Strong double-sided adhesive makes cord management under desk quick: peel, stick, and press firmly. For best results, apply to a clean, smooth surface and let it set for ...



This cable management rack mount panel is a standard 19" 2U plate that can be used as a cable organizer and provides a neat and clean appearance for your cabling. The cable management panel ...



Legrand® standard horizontal cable managers are available in 1RU and 2RU sizes. Fingers begin 3/4" from the face of rack to provide bend limitation for cables, protecting cables, equipment and network ...

Contact Us

For more information, pricing, or custom energy solutions, please contact us:

Website: <https://www.gdroofing.co.za>

Email: sales@gdroofing.co.za

Phone: +27 72 418 9365

Address: 22 Electron Avenue, Isando, Johannesburg, 1600, South Africa

This document is for informational purposes only. Specifications subject to change without notice.

