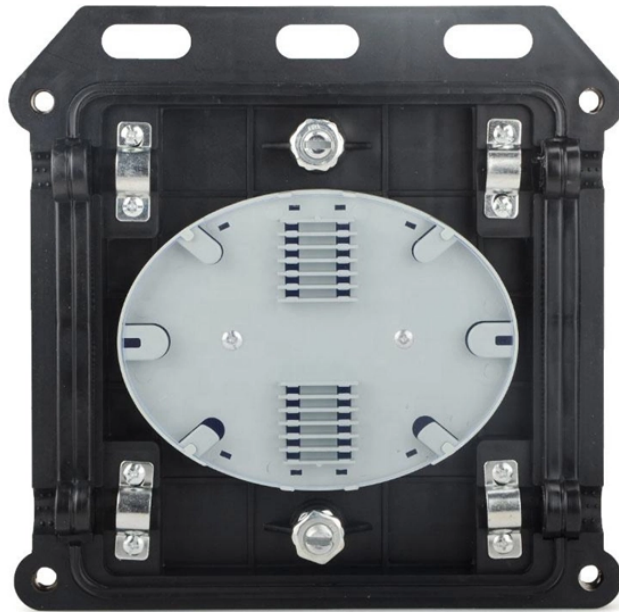


## Cable tray ladder test



### Overview

Standard procedures for load testing cable trays/ladders per IEC 61537, covering setup, loading, deflection, and acceptance criteria. us-trations without notice. All illustrations, descriptions and technical information included in this document are provided as indications and can cable trays are equivalent. The mechanical and electrical characteristics, tests, certifications, overall quality management, recommendations mentioned. Machine Translated by Google WORK INSTRUCTIONS LOAD TEST CABLE TRAY & CABLE LADDER BASED ON IEC 61537 1. Purpose Establish standard procedures for carrying out load tests on cable tray systems and cable ladder systems to ensure mechanical capabilities, deflection limits, and the absence of. This publication is intended as a practical guide for the proper and safe\* installation of cable ladder systems, cable tray systems, channel support systems and associated supports. Cable ladder systems and cable tray systems shall be manufactured in accordance with BS EN 61537, channel support. To ensure uniform performance and safety, the international standard IS/IEC 61537:2006 defines the requirements for cable tray systems and cable ladder systems used in electrical installations. This article explains

the standard in clear terms—what it covers, why it matters, where it applies, and. Cable tray load testing ensures your trays can hold the weight without bending or breaking.

## Cable tray ladder test



When selecting cable trays, enterprises often prioritize performance metrics, particularly safe working load. But how are these safe working load data determined?



The standard BS EN 61537 states that manufacturers must publish SWL (safe working load) details for their products, and specifies load test methods for determining the SWLs which can be supported by ...



IS/IEC 61537:2006 requirements for cable tray and cable ladder systems, testing methods, applications, and compliance explained clearly.



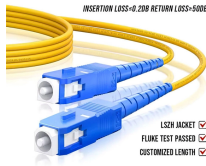
It applies to cable tray systems and cable ladder systems designed for the support and accommodation of cables and possibly other electrical equipment in installations. It covers a wide ...



Covers construction and test requirements for continuous, complete nonmetallic systems of ladder, ventilated, solid bottom cable trays, or channel type trays, intended for the support of power or ...



The document discusses load testing standards for cable trays according to IEC 61537 and NEMA VE 1-2002. Key points include: 1) IEC 61537 testing measures deflection at points along the tray under ...



Standard procedures for load testing cable trays/ladders per IEC 61537, covering setup, loading, deflection, and acceptance criteria.



Cable Tray Load Testing: Methods, Steps & Safety | Learn how to test cable trays for load capacity, record data, and prevent failures.



This test is crucial to ensure that cable ladders meet the technical and safety standards required for use in construction projects and electr...more



When fitting cable trays and their accessories, the products are cut on site to create changes of direction, adjust sections, etc. Damage can also occur during handling; as a result, both the ...

## Contact Us

For more information, pricing, or custom energy solutions, please contact us:

Website: <https://www.gdroofing.co.za>

Email: [sales@gdroofing.co.za](mailto:sales@gdroofing.co.za)

Phone: +27 72 418 9365

Address: 22 Electron Avenue, Isando, Johannesburg, 1600, South Africa

This document is for informational purposes only. Specifications subject to change without notice.

