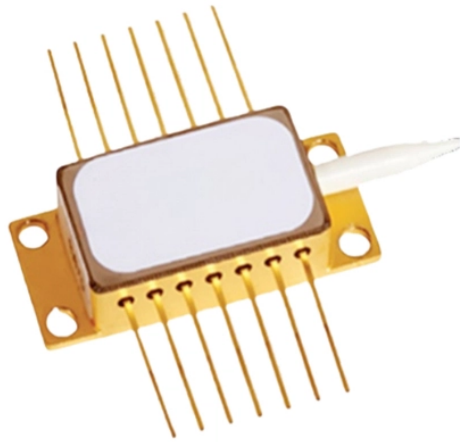


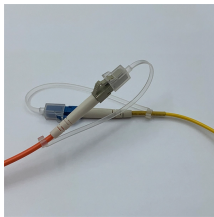
Cable tray ruler fabrication diagram



Cable tray ruler fabrication diagram



The purpose of this article is to define the sequence and methodology for the installation of electrical cable trays, cable trunking, cable raceways and boxes, ...



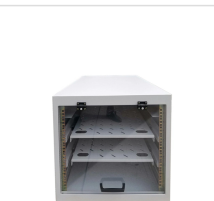
Show fabrication and installation details of cable tray, including plans, elevations, and sections of components and attachments to other construction elements.



Show fabrication and installation details of cable trays, including plans, elevations, and sections of components and attachments to other construction elements.



Cable trays simplify the wiring system design process and reduces the number of details. Cable tray wiring systems are well suited for computer aided design drawings.



Specifies requirements for metal cable trays and associated fittings designed for use in accordance with the rules of Canadian Electrical Code, Part I and the National Electrical Code®



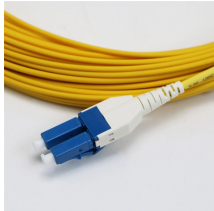
Select the bend direction (vertical or horizontal), choose a preset angle (30°/45°/60°) or enter measured height and distance manually, and the tool instantly outputs V-cut half width, full width, marking ...



This document contains engineering drawings for ladder cable trays, hold down clamps, and general notes. The drawings are for a construction project in Mekele, Ethiopia and provide dimensions and ...



Cable trays simplify the wiring system design process and reduces ...



Hubbell's NEXTFRAME® Ladder Tray is the effective and widely used cable runway that supports and delivers bundles of cable between cabinets, racks, and closets, along walls, and suspended from ...



One of the most important features of cable tray is that tray cable can easily be installed in existing trays if there is space available. Cable tray wiring systems allow wiring additions or modifications to be ...



This document contains reference information for typical cable tray support details, including cable tray data sheets, cable lists, and HVAC system specifications for a substation and rack room.



Cable tray length is selected based on the load to be supported, the distance between the supports (also referred to as the span), and handling and installation constraints.

Contact Us

For more information, pricing, or custom energy solutions, please contact us:

Website: <https://www.gdroofing.co.za>

Email: sales@gdroofing.co.za

Phone: +27 72 418 9365

Address: 22 Electron Avenue, Isando, Johannesburg, 1600, South Africa

This document is for informational purposes only. Specifications subject to change without notice.

