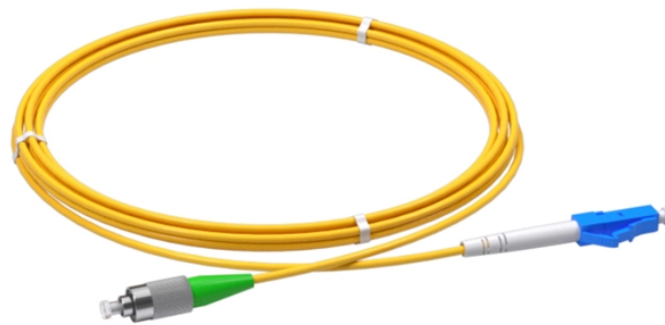
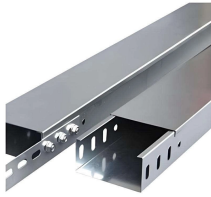


Cable tray slope tee construction



Cable tray slope tee construction



The Cable Tray Slope & Fabrication Calculator is a field-ready tool for electrical construction workers who need to quickly calculate V-cut dimensions, bolt hole positions, slope length, and hanger ...



Fabricated in numerous styles (wiremesh, ladder, ventilated trough, channel, and solid-bottom) and sizes, cable tray provides the greatest versatility among cable support systems, while offering ...



The Ladder Tray features light, rugged, tubular steel construction. It is designed for mechanical support and strain relief in long runs of cable and creates a smooth gradual bend for cable.



The ends of the tray fit into channels at the margins of the NoSplice support, then (supplied) Ground Splice is secured to the support. When utilizing the NoSplice, supports must be placed approximately ...



Slope is applied to cable tray in the Z direction of the current coordinate system in the drawing (typically the vertical direction for a building plan).



Cable tray length is selected based on the load to be supported, the distance between the supports (also referred to as the span), and handling and installation constraints.



The Wire Basket Overhead Cable Tray Routing System is composed of pathways, splices, mounting brackets, and accessories that allow the system to be configured for a wide range of applications and ...



Show fabrication and installation details of cable tray, including plans, elevations, and sections of components and attachments to other construction elements.



This guide covers the critical steps, from selecting the right electrical cable tray and performing accurate cable fill calculations to managing a safe cable pull through and ensuring all bonding and grounding ...



This section describes specific requirements, products, and methods of execution relating to cable management systems including tray, tray connectors, supports, brackets, engineered seismic ...



Our wind certification report provides you with list of acceptable B-Line series cable tray supports, fittings and covers based off of the environmental conditions, cable loading, and type of cable tray in your ...

Contact Us

For more information, pricing, or custom energy solutions, please contact us:

Website: <https://www.gdroofing.co.za>

Email: sales@gdroofing.co.za

Phone: +27 72 418 9365

Address: 22 Electron Avenue, Isando, Johannesburg, 1600, South Africa

This document is for informational purposes only. Specifications subject to change without notice.

