

## Calculation Method for Fixed Settings of Relay Protection



### Overview

Use this Protection Relay Setting Calculator to calculate pickup current, time multiplier settings (TMS), operating time, coordination time interval (CTI), and plug setting multiplier (PSM) using fault current, CT ratio, and IEC 60255 curve parameters. For thermal overload protection (ANSI Device 49), the pickup is typically set at 115% to 125% of motor full-load amps depending on service factor. SEL-311C Distance Protection Settings Impedance characteristics selection is purely based on the application and system requirement. Instantaneous units should be set so they. Protection systems are designed to:

- Detect faults promptly
- Isolate the faulty transformer from the system
- Prevent damage to the transformer and associated equipment
- Ensure system stability and safety

Effective protection involves a combination of different relay types, each targeting. e in Indian grid on 30th and 31st July 2012, Ministry of Power constituted a 'Task Force on Power System Analysis under Contingencies' in December 2012.

## Calculation Method for Fixed Settings of Relay Protection



The document provides calculations for relay settings for different components in ...



Use this Protection Relay Setting Calculator to calculate pickup current, time multiplier settings (TMS), operating time, coordination time interval (CTI), and plug setting multiplier (PSM) ...



Relay 8 backs up relays 6 and 7, and should be coordinated with the slowest of these two relays. Relay 7 has an instantaneous setting of 1100 A, which is smaller than the setting of relay 6, and so the ...



Calculate thermal overload, overcurrent, ground fault, and differential relay settings with step-by-step examples. Covers CT ratios and common mistakes.



Therefore, the setting calculation method of the power transformer relay protection based on the Electrical Transient Analysis Program (ETAP) is designed. The harmonic transfer characteristics of ...



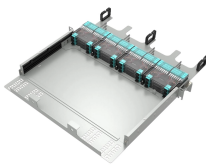
Therefore, the setting calculation method of the power transformer relay protection based on the Electrical Transient Analysis Program (ETAP) is designed. The harmonic transfer...



This guide aims to provide a comprehensive overview of the steps, considerations, and best practices for calculating transformer protection relay settings, helping professionals develop effective protection ...



Relay Settings Calculations - Electrical Engineering - Free download as PDF File (.pdf), Text File (.txt) or view presentation slides online.



Therefore, an automatic calculation method and system for relay protection setting in new energy station suitable for large-scale power system is proposed in this paper, which can significantly improve ...



o the protection sub-committee was to prepare model setting calculations for typical IEDs used in protection of 400kV line, transformer, reactor and busbar. This document gives the model setting ...



The relay (SEL-787) use the transformer MVA rating as a common reference point, TAP scaling converts all sec-ondary currents entering the relay from the two windings to per unit values, thus ...

## Contact Us

For more information, pricing, or custom energy solutions, please contact us:

Website: <https://www.gdroofing.co.za>

Email: [sales@gdroofing.co.za](mailto:sales@gdroofing.co.za)

Phone: +27 72 418 9365

Address: 22 Electron Avenue, Isando, Johannesburg, 1600, South Africa

This document is for informational purposes only. Specifications subject to change without notice.

