

## Campus Intelligent Power Distribution Box Company



## Campus Intelligent Power Distribution Box Company



INDU-ELECTRIC® is your global partner for tailored power distribution solutions – cross-industry, customer-specific, and available worldwide. Select your region ...



Browse power distribution boxes with circuit breaker protection and multiple outlet configurations. Shop durable solutions for construction and emergency use.



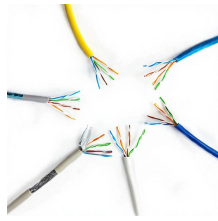
Learn about scalable power distribution for commercial buildings, business parks, healthcare, industrial facilities, and other large campuses.



Browse power distribution boxes with circuit breaker protection and multiple outlet configurations. Shop durable solutions for construction and emergency use.



Lex Products offers a full range of portable power distribution units including boxes, boards and panels, specifically engineered for indoor and outdoor use.



The company's intelligent rack PDUs are built to reliably and efficiently distribute power to all devices. Operators can meter at the inlet, which ...



Designed for durability in tough environments, these transportable distribution units make it easy to control and deliver power where you need it most — from construction sites and outdoor events to ...



INDU-ELECTRIC® is your global partner for tailored power distribution solutions - cross-industry, customer-specific, and available worldwide. Select your region and language to discover customized ...



Feel confident knowing that your cables will not come unplugged or fail at a crucial time in the middle of a concert, television production, or sporting event with our large lineup of NEMA locking cords, power ...



The company's intelligent rack PDUs are built to reliably and efficiently distribute power to all devices. Operators can meter at the inlet, which provides a view of power usage and capacity ...



A newly constructed university campus required power distribution. Olsun Electrics came up with a viable solution, a dry type transformer that was rated at 150KVA.



For more than 35 years, we have been a trusted resource in the delivery, support and service of industry-leading power quality solutions for critical health care environments and other applications

...

## Contact Us

For more information, pricing, or custom energy solutions, please contact us:

Website: <https://www.gdroofing.co.za>

Email: [sales@gdroofing.co.za](mailto:sales@gdroofing.co.za)

Phone: +27 72 418 9365

Address: 22 Electron Avenue, Isando, Johannesburg, 1600, South Africa

This document is for informational purposes only. Specifications subject to change without notice.

