

## Can a distribution box be called a junction box



### Overview

A distribution box, also known as a junction box, socket or power strip, is a crucial component in electrical systems. Each outgoing line can be individually. A junction box is an enclosure for joining and routing wires. Its primary purpose is to provide a secure, protected space for wire splices, terminations, and connections, shielding them from moisture, dust, and accidental contact. Their primary function is to receive electrical power from a source (such as a transformer) and distribute it to various circuits. In this article, we will discuss the differences between a distribution box and a junction box, their specific functions, and the key factors to consider when choosing between the two.

## Can a distribution box be called a junction box



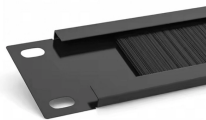
Unlike the simpler junction box or the signal-routing marshalling panel, a system cabinet is the “brain and muscle” of an electrical installation—it ...



Unlike the simpler junction box or the signal-routing marshalling panel, a system cabinet is the “brain and muscle” of an electrical installation—it actively controls processes, distributes ...



In a broad sense, any electrical box can be used as a junction box. Most standard code-approved electrical boxes found at home centers can be used as junction boxes.



Discover the key difference between a distribution box and a junction box, including their functions, structure, and ideal applications.



An electrical junction box (also known as a "jbox ") is an enclosure housing electrical connections. Junction boxes protect the electrical connections from the weather, also playing a crucial role in ...



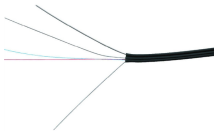
A distribution box, also known as a junction box, socket or power strip, is a crucial component in electrical systems. This versatile unit consists of multiple sockets and can be easily ...



While distribution boxes, control boxes, and junction boxes may appear similar, their roles within electrical systems are entirely different. Distribution boxes ensure safe and efficient power ...



Unlike distribution boxes, junction boxes are not involved in regulating or distributing electrical power to different circuits. Instead, they serve as enclosures for electrical connections, ...



Q: Can a junction box be used as a distribution box? A: No. Junction boxes are intended only for wire splicing and branching, while distribution boxes are designed for circuit protection and power ...



Distribution boxes, also known as junction boxes, electrical boxes, or panelboards, are essential components in electrical distribution systems. They serve as protective enclosures for the ...



What is the main difference between a distribution box and a junction box? A distribution box distributes power to multiple circuits and includes protection, while a junction box simply joins ...

## Contact Us

For more information, pricing, or custom energy solutions, please contact us:

Website: <https://www.gdroofing.co.za>

Email: [sales@gdroofing.co.za](mailto:sales@gdroofing.co.za)

Phone: +27 72 418 9365

Address: 22 Electron Avenue, Isando, Johannesburg, 1600, South Africa

This document is for informational purposes only. Specifications subject to change without notice.

