

## Can cable trays be disconnected



## Can cable trays be disconnected



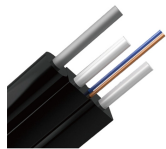
Cable tray is the preferred wiring method for industrial facilities, data centers, and large commercial buildings where routing dozens or hundreds of cables through individual conduits would ...



The proposed cable tray routes show long straight pieces of tray. But to get around the obstacles the design the cables simply swung into the next long straight piece unsupported. All the ...



This can be accomplished by a separate cable tray system or by a divider within a cable tray. NEC section 318-5 (e) indicates that multiconductor cables rated 600 volts or less are permitted in the ...



Many electrical professionals believe that cable trays are raceways. Based on the definition, this couldn't be further from the truth.



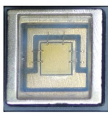
The Ladder Tray features light, rugged, tubular steel construction. It is designed for mechanical support and strain relief in long runs of cable and creates a smooth gradual bend for cable. Rail and stringer ...



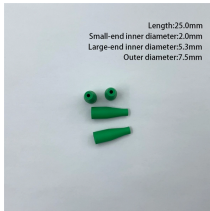
**SOLID-BOTTOM CABLE TRAY** Providing additional cable protection, solid-bottom cable tray is sometimes preferred to support and protect numerous small instrumentation and control cables. ...



Because of this, it's not very often that cable trays are used to support service entrance conductors. Most of the time, cable trays do not contain service entrance conductors because cable trays are ...



The electricians want to "notch" the cable tray side rail so wireways can be attached to it and transition the cabling into it. They'd remove approximately 12" of the rail at several locations ...



Discover over 100 expert answers about cable trays, covering key topics like material selection, load capacity, installation methods, and maintenance.



Cable trays are not raceways, but they are treated as a structural component of a facility's electrical system. Cable trays are a part of a planned cable management system to support, route, protect and ...

## Contact Us

For more information, pricing, or custom energy solutions, please contact us:

Website: <https://www.gdroofing.co.za>

Email: [sales@gdroofing.co.za](mailto:sales@gdroofing.co.za)

Phone: +27 72 418 9365

Address: 22 Electron Avenue, Isando, Johannesburg, 1600, South Africa

This document is for informational purposes only. Specifications subject to change without notice.

