

Can gigabit optical modules not be stacked



Overview

Please check the type of optical module (s) on interface "XGigabitEthernetx/x/x/x" is displayed, the type of the optical module installed on the port is not supported by the port. Run the display transceiver command to check the value of the Transceiver Type field in. An optical module is an optoelectronic conversion device that transmits data by converting electrical signals into optical signals. Common types of optical modules include SFP, SFP+, SFP28, QSFP, QSFP28, etc. Optical transmission features low loss and is fit for long distance transmission. The SFP modules and DAC cables are used inside SFP28/SFP/SFP+ slots on UniFi or client devices. SFP+ and SFP28 DAC Cables: Establishing 1/10/25 Gbps connections over short distances, e. between devices in the same. When you run the port interface { interface-typeinterface-number1 [tointerface-typeinterface-number2] } <1-10> enable command to configure stack member ports, if the message "Error: Configuration failed. Cisco Meraki offers branded SFP modules, and while we do not prevent third-party accessories from functioning, users should conduct their own tests to ensure proper compatibility Many Cisco Catalyst 1300 Series Switches are designed to be affordable, simple-to-use switches for

small and medium-sized businesses. To enhance network scalability, reliability, and ease of management, these switches support stacking technology. Stacking allows multiple physical switches to be.

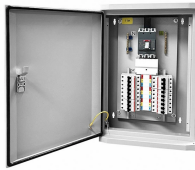
Can gigabit optical modules not be stacked



First, insert the SFP module into the slot and connect the Ethernet cable afterwards. If the cable is inserted first, the latch on the module may prevent it from being fully inserted.



Many, although not all, 10G SFP+ ports have support to use a 1G SFP transceiver (or even a 100Mbps FX SFP transceiver). See the QuickSpecs for the Switch product and verify if the 1G or 100Mbps ...



To stack two or more devices, you must reconfigure the desired network ports as stack ports and then connect the switches with these stack ports in a ring or chain topology.



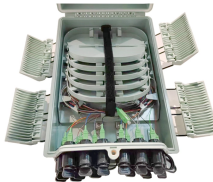
Copper transceiver modules, also called RJ-45 modules, transmit electrical signals over twisted pair cables and do not provide conversion between electrical and optical signals.



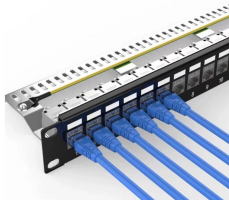
Gigabit SFP modules are designed to be hot-pluggable, meaning they can be inserted or removed while the network device is powered on. Actual behavior depends on the switch or NIC, but hot-swapping ...



Choosing between 400G and 800G optical modules depends on your workloads, scale, and budget. This guide breaks down the differences, use cases, and deployment advice in simple but ...



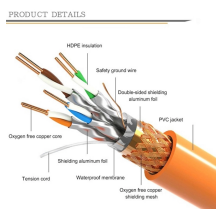
In this case, replace the current optical module with a supported optical module and then configure the stack port. For details about the optical modules supported by a port, see the description in " Stack ...



This article provides technical data on Fiber Transceivers and stacking accessories compatible with Meraki devices. Cisco Meraki offers branded SFP modules, and while we do not prevent third-party ...



As an essential component of network communication, optical modules have been widely used in various scenarios such as data centers, enterprise LANs, and WANs. An optical module is ...



Need to layout a board to connect to an optical PHY transceiver? Here are some high speed design aspects you'll need to consider.

Contact Us

For more information, pricing, or custom energy solutions, please contact us:

Website: <https://www.gdroofing.co.za>

Email: sales@gdroofing.co.za

Phone: +27 72 418 9365

Address: 22 Electron Avenue, Isando, Johannesburg, 1600, South Africa

This document is for informational purposes only. Specifications subject to change without notice.

