

## Can the core switch be configured remotely over an external network



### Overview

When managing network switches, SSH provides a secure method to access the switch's command-line interface (CLI), allowing administrators to configure and monitor network devices remotely. Accessing the CLI allows commands to be entered in a terminal-based window. If you prefer to configure using terminal commands on your switch through the CLI rather than the. A switch has multiple interfaces or ports to configure, and it is sometimes difficult for inexperienced member how to configure a switch initially so that it can be reachable remotely. So without further ado let's deep into this. Step 1: Unpack, install and connect your switch to the internet. Plug any one of the Ethernet or fiber ports. Secure Shell (SSH) is a cryptographic network protocol that enables secure communication between a client and a server over an unsecured network. I could instead create multiple user accounts.

## Can the core switch be configured remotely over an external network



If you want to access the switch via a specified port (hereafter referred to as the access port), you can configure the port as a routed port and specify its IP address, or configure the IP address of the ...



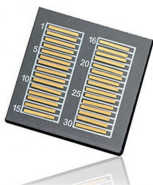
Establishing an SSH connection to your network switch is a critical component of modern network management. By following the steps outlined in this guide, you can ensure a secure and ...



Unpack and mount your switch (desktop or rack mount) and power it on. Plug any one of the Ethernet or fiber ports into an upstream device on your LAN. The uplink port should have access to a DHCP ...



If we have a large organization, we could connect our switch to an external server, such as a RADIUS server. The external server handles authentication and user accounts.



To learn about the SSH configuration, the Cisco Packet Tracer tool is used to demonstrate the steps to be followed and associated commands to be executed for this purpose.



After configuring the switch's IP parameters, you can access the onboard configuration program from anywhere within the attached network. The onboard configuration program can be accessed using ...



Watch a real-time remote configuration of a Cisco switch straight from the server room!



In order to remotely access the CLI of your switch, you must use an SSH or Telnet client. You must also enable the Telnet and SSH service on your switch first before you can access it ...



In this article, let's talk about where and what to configure so that a switch can be accessed remotely. A switch has multiple interfaces or ports to configure, and it is sometimes difficult ...



To manage a core switch on iMaster NCE-Campus using commands, you need to connect the core switch to iMaster NCE-Campus first and then enable the NETCONF function.

## Contact Us

For more information, pricing, or custom energy solutions, please contact us:

Website: <https://www.gdroofing.co.za>

Email: [sales@gdroofing.co.za](mailto:sales@gdroofing.co.za)

Phone: +27 72 418 9365

Address: 22 Electron Avenue, Isando, Johannesburg, 1600, South Africa

This document is for informational purposes only. Specifications subject to change without notice.

