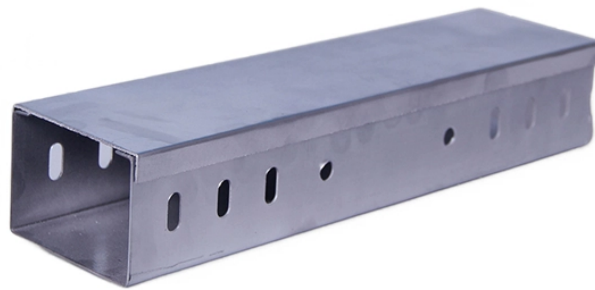


Carrier Level 1 Optical Distribution Box



Overview

These small enclosures accept all OCC fiber optic adapter plates and provides splicing options for up to 12 fibers. An Optical Distribution Frame (ODF) is the central hub for fiber splicing, termination, patching, and cable protection in modern optical networks. As data centers, enterprises, telecom operators, and smart-building infrastructures deploy increasingly dense fiber links, ODFs provide the structured. Fiber distribution box is suitable for the wiring connection of optical cable and optical communication equipment, through the adapter in the wiring box, the optical jumper leads the optical signal, and realizes the optical wiring function. OTRANS strives to provide you with professional, reliable. power utility installation, always requires compact design, easy installation and operation, as well as weather durable characteristics. When fully loaded with EDGE 4U housings the optical distribution frame dual-frame model provides a total capacity of 5,760 LC Duplex or MTP ports / 11,520 LC Simplex ports while the single-frame. With Huawei's core concept for ODN construction centering on full and dense coverage coupled with short and easy access, Huawei's ODN 3. In the earliest FTTH solution, ODN 1.

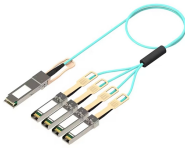
Carrier Level 1 Optical Distribution Box



An Optical Distribution Frame is not just a passive component, it is the centralized optical management platform that determines the scalability, reliability, and maintainability of fiber networks.



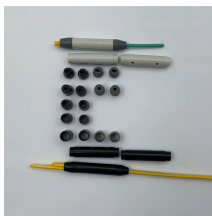
Discover the world of Optical Carrier Levels (OC-x), their role in SONET and ATM networks, and how they compare with the T-Carrier system.



These small enclosures accept all OCC fiber optic adapter plates and provides splicing options for up to 12 fibers. This enclosure is an affordable solution that provides easy installations and customizable ...



We offer a wide range of 1-24 core FDB boxes and ODF cabinets for indoor/outdoor FTTX deployment. Durable, IP65 rated, and easy to install. Browse our models and get a wholesale quote.



We offer a wide range of 1-24 core FDB boxes and ODF cabinets for indoor/outdoor FTTX deployment. Durable, IP65 rated, and easy to install. Browse our models ...



Optical Distribution Box (ODB-96): This outdoor-rated wall mount enclosure is designed for FTTH networks in single dwelling, multi-dwelling and multi-tenant applications for up to 96 subscribers.



Fiber distribution box is made of high-strength engineering plastics, anti-UV, anti-aging ability. The distribution box is sealed adopts buckle + two screw type structural seals, and the left and right ...



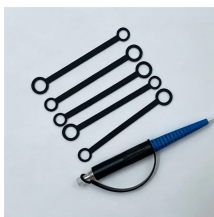
Premium-Line FTTH distribution box is aim designed for multi-purpose applications in FTTH projects, the dual layer design supports direct termination, and also FTTH distributions via mini splitter built in, ...



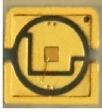
An Optical Distribution Frame is not just a passive component, it is the centralized optical management platform that determines the scalability, ...



The Corning® Optical Distribution Frame is optimized for high-density cross-connect applications.



Explore optical distribution frames (ODF) with efficient distributed chassis solutions at CommScope



In this scenario, it is recommended that level-1 optical splitters (hub boxes) are installed in street cabinets. If possible, the coverage area of level-1 splitters should be narrowed so that hub boxes are ...

Contact Us

For more information, pricing, or custom energy solutions, please contact us:

Website: <https://www.gdroofing.co.za>

Email: sales@gdroofing.co.za

Phone: +27 72 418 9365

Address: 22 Electron Avenue, Isando, Johannesburg, 1600, South Africa

This document is for informational purposes only. Specifications subject to change without notice.

