

Case Study of Polymer Cable Trays



Overview

has completed various different cable tray monitoring projects for over two decades. Senkox Technologies Inc. Metro and railway networks use a wide array of cabling. Challenge: Managing and protecting power and communication cables in corrosive and harsh environments. Result: Reduced maintenance costs and increased cable lifespan. Having recently been ISO 9001 Certified, Real Safety offer High-quality composite solutions and excellent service, complying with customer specifications as well as. Abs plastic cable trays are located being a chosen option in a great many business and business oriented applications.

Case Study of Polymer Cable Trays



Abs plastic cable trays are located being a chosen option in a great many business and business oriented applications. This post delves into the key benefits of abs plastic, fiberglass cable trays in ...



The ladder type design features horizontal rails (rungs) connected by vertical posts (side rails), providing a secure and accessible platform for cable installation and management.



Reducing cable tray costs while maintaining structural integrity and aesthetic appeal for exposed installations. Optimised specifications through value engineering and established direct supply chain ...



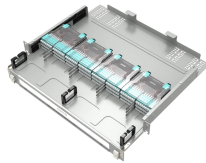
Get to know how SS316 and FRP cable trays survive the severe water treatment plants. In this case study, the issue of corrosion resistance, load capacity, and tips on how to install it in ...



Our solutions include conceptual design, prototype development, testing, manufacturing, logistic support, installation and comprehensive after sales service. We are based in Esbjerg, the maritime ...



The application of cable trays in various industries, considering the specific needs and challenges of each, leads to improved efficiency, enhanced safety, and reduced maintenance costs.



A case study demonstrates the successful deployment of a tray system in a 5MW data center, highlighting significant improvements in installation time and error reduction.



Polymer cable trays are lightweight, durable systems crafted from plastic to manage and support electrical cables. They're designed to be highly resistant to corrosion, UV radiation, and various ...



EDGE TRAY by CREO Composites represents our advanced line of FRP (Fiber Reinforced Polymer) cable tray systems, developed in close collaboration with trusted manufacturers.



Senkox Technologies Inc. has completed various different cable tray monitoring projects for over two decades. In this case study we will examine a completed project, the requirements of this project, ...

Contact Us

For more information, pricing, or custom energy solutions, please contact us:

Website: <https://www.gdroofing.co.za>

Email: sales@gdroofing.co.za

Phone: +27 72 418 9365

Address: 22 Electron Avenue, Isando, Johannesburg, 1600, South Africa

This document is for informational purposes only. Specifications subject to change without notice.

