

## Chilean Customs Declaration Optical Modulator PAM4



## Chilean Customs Declaration Optical Modulator PAM4



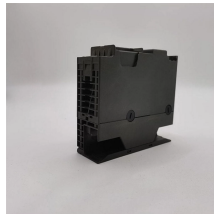
Successfully importing into Chile requires understanding and properly preparing a specific set of documents. This comprehensive guide outlines every document type, recent ...



The 50GE PAM4 optical module uses the QSFP28 encapsulation mode, LC optical interfaces, and single-mode optical fibers. The transmission distance is 10/40 km, and the maximum power ...



How much should I declare to Chile? Find out with the declaration calculator, made specifically for Chile, for all agents and shipping services.



The Eye mode PAM Outer OMA measurement measures Optical Modulation Amplitude (OMA) with PAM4 (levels 0 and 3), PAM6 (levels 0 and 5), and PAM8 (levels 0 and 7). This measurement can ...



It was introduced to simplify the customs and immigration processes for all passengers arriving by air, land, or sea. You can submit your Chile Customs Affidavit from 48 hours before your arrival date. If ...



Professional Chilean customs import declaration form with HS code classification, automated duty calculation, and payment integration for SII and SNA compliance.



Importers are required to submit a customs declaration form, known as the DUS (Declaración Única de Salida), to the Chilean customs authorities before the goods arrive.



Declare the plant and animal origin products, goods, and currencies you are carrying in your luggage and/or means of transportation. Procedure free of charge and individual, valid only for the arrival date ...



FWM conversion efficiency is maximum for phase-matched condition,  $D_b = 0$ , with  $f_0 = f_i$  or  $f_k$ . With fiber PMD, the FWM mitigation with polarization interleaving is somewhat reduced. Thank You!

## Contact Us

For more information, pricing, or custom energy solutions, please contact us:

Website: <https://www.gdroofing.co.za>

Email: [sales@gdroofing.co.za](mailto:sales@gdroofing.co.za)

Phone: +27 72 418 9365

Address: 22 Electron Avenue, Isando, Johannesburg, 1600, South Africa

This document is for informational purposes only. Specifications subject to change without notice.

