

Chip Optical Module Section



Overview

Optical module usually consists of a transmitter assembly (TOSA, containing a laser LD chip), a receiver assembly (ROSA, containing a photodetector PD chip), a driver circuit, an optoelectronic interface, a heat sink (some models), a housing, a pull ring and so on. This document focuses on projection optical modules that incorporate Texas Instruments' DLP Display chips and are designed to project an image onto a surface for a variety of applications, including smartphones, tablets, display projectors, smart home displays, digital signage, AR glasses, and. This paper discusses the evolution of both conventional and advanced packaging technologies and outlines future directions for design, fabrication, and packaging using glass substrates and femtosecond laser processing. These packages have multiple pins and leads that are connected via wiring to the internal semiconductor chip and other parts. In optical semiconductors, such. Optical modules are devices used to connect network devices, transmit and receive data between network devices, and can be used to convert optical and electrical signals. The optical module is a very important component in an optical communication system. 52 billion by 2032, at a CAGR of 8.

Chip Optical Module Section



The optical module is a very important component in an optical communication system. This article will introduce you to the internal components and structure of ...



This article answers key questions about 800G and 1.6T silicon photonics optical transceivers, covering chip architecture, packaging differences versus EML, performance trade-offs, production challenges, ...



The chip architecture of an optical module is a cornerstone of optical communication systems. It determines the performance limit, transmission capability, and power consumption of the ...



The Global Optical Module Chip market was valued at US\$ 823 million in 2024 and is projected to reach US\$ 1.52 billion by 2032. Segmentation Analysis: Detailed breakdown by product type (Laser & ...



This section explains the structure of a typical pigtail butterfly module, which gets its name from the two rows of seven leads at right angles on each side of the metal package plus an optical fiber pigtail at ...



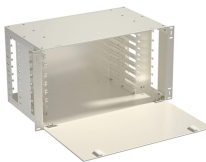
The internal design of an optical module aims to ensure efficient and stable electro-optical conversion while addressing factors like heat dissipation, protection, and cost.



Meanwhile, the optical module, enabled by silicon photonics, is now treated similarly to electronic chips, and advanced co-packaged optics (CPO) is being extensively researched and ...



This document focuses on projection optical modules that incorporate Texas Instruments' DLP Display chips and are designed to project an image onto a surface for a variety of applications, including ...



It has two sets of optical systems, each including a light source and a detector, so it is possible to measure two types of fluorescent reagents with one module.



Optical module usually consists of a transmitter assembly (TOSA, containing a laser LD chip), a receiver assembly (ROSA, containing a photodetector PD chip), a driver circuit, an ...

Contact Us

For more information, pricing, or custom energy solutions, please contact us:

Website: <https://www.gdroofing.co.za>

Email: sales@gdroofing.co.za

Phone: +27 72 418 9365

Address: 22 Electron Avenue, Isando, Johannesburg, 1600, South Africa

This document is for informational purposes only. Specifications subject to change without notice.

