

Classification of the uses of electrical box signage



Overview

Electrical boxes are classified by multiple dimensions, not just shape. Common categories include box shape, device function, installation environment, gang size, and material. Shape helps identify where a box is used. Whether you're working on a residential, commercial, or industrial project, understanding the role of electrical boxes is crucial for ensuring safety and functionality. 305 (b) (3) (iii) Covers for boxes shall be permanently marked "HIGH VOLTAGE. 303 (e) (1) (ii). Electric signs and outline lighting are highly visible, safety-critical systems with unique code requirements for conductors, grounding, and equipment access. They are the focus of Article 600 of the National Electric Code.

Classification of the uses of electrical box signage



This OSHA-format Electrical sign makes your Electrical message clear to employees, visitors and inspectors. US-made OSHA safety sign is UV, chemical, abrasion and moisture resistant.



Learn about the many common types of wall and ceiling electrical boxes for switches, outlets, light fixtures, ceiling fans, and junction boxes.



Electric signs and outline lighting fall under NEC Article 600, which defines wiring, grounding, and installation rules to ensure safe and compliant ...



Electric signs and outline lighting fall under NEC Article 600, which defines wiring, grounding, and installation rules to ensure safe and compliant commercial signage.



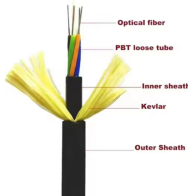
Discover 25 common electrical safety signs, their meanings, and importance to prevent hazards, ensure compliance, and promote workplace safety.



Article 600 covers the installation of conductors, equipment, and field wiring for electric signs and outline lighting. It also covers retrofit kits.



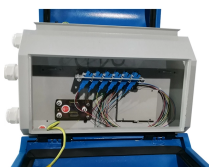
Article 600 covers the installation of conductors, equipment, and field wiring for electric signs and outline lighting, including neon tubing for signs, decorative elements, skeleton tubing, or art ...



Learn the different types of electrical boxes, including outlet, switch, junction, ceiling, weatherproof, and low-voltage boxes, with practical uses and selection tips.



Enhance electrical safety in your workplace with our comprehensive range of OSHA-compliant signs, labels, and markers. From high voltage warnings to arc flash labels and custom solutions, we help ...



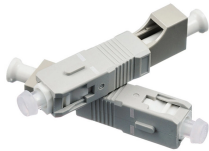
Article 600 covers the installation of conductors, equipment, and field wiring for electric signs and outline lighting. It also covers retrofit kits.



Discover the 4 main types of electrical boxes, their applications, and how to select the right material (PVC vs. Metal), and pro sizing tips for contractors!



Explore the various types of electrical boxes in our guide, detailing their uses, installation tips, and how to choose the right one for your project.



Enhance electrical safety in your workplace with our comprehensive range of OSHA-compliant signs, labels, and markers. From high voltage warnings to arc flash ...

Contact Us

For more information, pricing, or custom energy solutions, please contact us:

Website: <https://www.gdroofing.co.za>

Email: sales@gdroofing.co.za

Phone: +27 72 418 9365

Address: 22 Electron Avenue, Isando, Johannesburg, 1600, South Africa

This document is for informational purposes only. Specifications subject to change without notice.

