

Columbia Cable Tray Laying



Columbia Cable Tray Laying



Efficient cable tray installation and proper cable handling are critical for ensuring the reliability and safety of electrical systems. Adherence to these guidelines is essential: Cable Tray Installation Method ...



Mastering cable tray installation is crucial for creating a safe, organised, and efficient cable management system. By following this step-by-step guide, you can ensure a seamless setup that ...



Learn how to install cable trays for large-scale projects with our professional, step-by-step guide covering industry standards, safety protocols, and efficient routing techniques.



1.1 This section applies to cable trays utilized to support and route low voltage cables (telecom, security, A/V). No fire alarm cables will be permitted to be installed in cable trays.



Cable tray layout must take into consideration the design limits of the cable. To minimize damage and verify integrity after installation, follow the practices outlined in cable handling ...



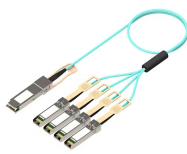
Whether you're building a commercial setup or upgrading an industrial plant, proper cable tray installation ensures neat wiring, safe access, and easy maintenance. But before you lay the first tray ...



Cable tray length is selected based on the load to be supported, the distance between the supports (also referred to as the span), and handling and installation constraints.



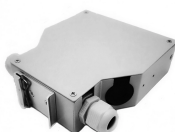
Learn the best practices for installing cables in trays. This guide covers essential steps, technical requirements, and key details for efficient cable tray installation.



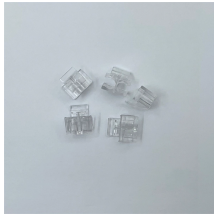
This guide covers the critical steps, from selecting the right electrical cable tray and performing accurate cable fill calculations to managing a safe cable pull through and ensuring all bonding and grounding ...



Step-by-step on-site guide: learn how to plan, mark, support, and install cable trays correctly, from shop drawing approval to final checks.



Learn how to install cable trays for large-scale projects with our professional, step-by-step guide covering industry standards, safety protocols, ...



This document provides details on installing cable trays and their support systems. It includes diagrams showing how to mount cable trays on walls using pre-fabricated flanges or channels.

Contact Us

For more information, pricing, or custom energy solutions, please contact us:

Website: <https://www.gdroofing.co.za>

Email: sales@gdroofing.co.za

Phone: +27 72 418 9365

Address: 22 Electron Avenue, Isando, Johannesburg, 1600, South Africa

This document is for informational purposes only. Specifications subject to change without notice.

